

# UNIFIED WORK PROGRAM

---

2010

---

---



---

MARATHON COUNTY  
Conservation, Planning and Zoning  
Department

---

January 2010



**MARATHON COUNTY  
CONSERVATION, PLANNING AND ZONING DEPARTMENT**

**MISSION STATEMENT**

***To create, advocate and implement strategies to conserve natural and community resources.***

**Core Values**

*We know we are living the core value of **SERVICE** when we:*

- Provide clear answers to questions. If we do not have the answer, we find it.
- Deliver on promises.
- "Go the extra mile" for others.
- Provide timely and appropriate levels of service.

*We know we are living the core value of **INTEGRITY** when we:*

- Are honest and open.
- Keep our word.
- Maintain high ethical standards.
- Demonstrate mutual respect and trust in others.

*We know we are living the core value of **QUALITY** when we:*

- Provide services that are "best practices" in the field.
- Are experts on what we do.
- Are committed to continuous learning.
- Listen for, seek, and respond to feedback.
- Provide professional, predictable, reliable service to our customers.

*We know we are living the core value of **DIVERSITY** when we:*

- Treat everyone equally.
- Welcome, and learn from, people with different perspectives and experiences.
- Refuse to accept racist, sexist or disparaging comments and behavior.

*We know we are living the core value of **SHARED PURPOSE** when we:*

- Engage in problem solving, not blame placing.
- Commit to shared success. Understanding that our individual success is hollow without our team success.
- Attain our department and organizational goals by working collaboratively with our policy makers, our staff, and with our customers.

*We know we are living the core value of **STEWARDSHIP OF OUR RESOURCES** when we:*

- Use our resources in the most cost effective manner to maximize their value.
- Support best practices that support sustainable development and maximizes environmental stewardship.
- Evaluate and consider emerging trends, new technology, and changing customer needs in relation to the implications to our services.

**MARATHON COUNTY  
CONSERVATION, PLANNING AND ZONING DEPARTMENT**

**MISSION STATEMENT**

*To create, advocate and implement strategies to conserve natural and community resources.*

**Summary:**

**The Department of Conservation, Planning and Zoning** mission is to create, advocate and implement strategies to conserve natural and community resources.

The [Conservation Division](#) administers programs to implement the Land and Water Resource Management Plan which includes the Lower Big Rib River Priority Watershed, the Farmland Preservation Program, Managed Intensive Grazing, Lake Districts, Wildlife Damage and Abatement, as well as regulatory activities associated with the Waste Storage Facility and Nutrient Management Ordinance and the Livestock Facilities Siting Licensing Ordinance.

The [Planning Division](#) is involved with the preparation and implementation of the Capital Improvement Program (CIP), Comprehensive planning, Transportation planning services for the metropolitan area (MPO), and census/redistricting.

The [Zoning & Regulatory Division](#) administers the County's zoning, shoreland, private sewage system, airport, subdivision, nonmetallic mining and other ordinances. These ordinances are administered and enforced county wide except for comprehensive zoning which must be approved by the towns before becoming effective.

The [Technical Services Division](#) is comprised of the County Surveyor's office and the Geographic Information Systems (GIS) functions. GIS prepares all of the paper and electronic maps for the department and administers and implements the County's rural addressing ordinance. The surveyor replaces, re-establishes and records information for section markers. The office also reviews and keeps records for private surveys.

# CONSERVATION, PLANNING AND ZONING DEPARTMENT – PROGRAM MODEL

**Contact Name:** Ed Hammer, Director

**Standing Committee:** Environmental Resources Committee

**Working Committees:** Land Conservation & Zoning Committee, Capital Improvement Committee, and Marathon County Metropolitan Planning Commission.

**Program customer:** Metropolitan and rural municipalities, residents, and businesses.

COMMITMENTS (INPUTS)		ACTIVITIES		OUTCOMES	OVERARCHING GOALS
Programs	Resources	“Work”	Outputs	Long Term	Community Development for Planned Growth and Recreation
1. <u>Comprehensive Planning</u> <ul style="list-style-type: none"> <li>• Metropolitan Planning</li> <li>• Sanitary Service Area</li> <li>• Urban Storm Water Management</li> <li>• Elderly &amp; Disabled Transportation</li> <li>• Community Planning</li> </ul>	Staff: 2.8FTE' (11%) Tax Levy: \$415,671 Grants: \$451,024	Community Planning Regulatory Administration Technical Assistance Mapping	<u>Plans:</u> -Comprehensive -Transportation -Sewer Service Area -Agricultural Preservation -Nutrient Management -Managed Grazing	Land use activities are well planned to minimize conflicts, maximize infrastructure investments, and protect the rural character.  Improve and protect the surface and ground water assets for public health and safety, recreational opportunities and economic viability.	Marathon County comprehensively plans growth for the best potential use of land and resources to protect the environment, support recreational opportunities and promote economic development.  Community interests are placed ahead of individual interests when there is a perceived benefit that the community is willing to fund.
2. <u>Land &amp; Water Resource Management:</u> <ul style="list-style-type: none"> <li>• Farmland Preservation</li> <li>• Managed Intensive Grazing</li> <li>• Priority Watersheds</li> <li>• Lake Districts</li> </ul>	Staff: 5.4 FTE (21.6%) Tax Levy – \$334,656 Revenue - \$97,898 Grants: \$1,282,032	Design reviews and approvals Best Management Practices Site Inspections	<u>Regulatory:</u> -Cost-share -Contracts -Permits -Licenses -Land Inventories -Compliance Reports	The soil and water resources are maintained as a productive asset through topsoil and organic matter conservation.	Public and private resources (natural and community) support the health, safety, and welfare of people.  The uniqueness of Central WI/Marathon County is preserved (i.e. rural character, open spaces, moderate growth, natural beauty, culture, water resources, diverse vegetation, wildlife, soils, and recreational opportunities).
3. <u>Regulatory :</u> <ul style="list-style-type: none"> <li>• Land Division</li> <li>• Zoning</li> <li>• On-site waste</li> <li>• Waste Storage Facility</li> <li>• Wetland, Shoreland, and Floodplain</li> <li>• Nonmetallic Mining</li> <li>• Livestock Facility Siting</li> </ul>	Staff: 10.7 FTE (42.8%) Revenues - \$400,450 Tax Levy – \$455,654 Grants: \$85,000	Information & Education Soil Erosion Transect Survey	<u>Technical:</u> -Design Plans -Maps -Surveys	Marathon County Agricultural and Woodlot producers are economically viable.	
4. <u>Technical Services:</u> <ul style="list-style-type: none"> <li>• Capital Improvement</li> <li>• Geographic Information System</li> <li>• Mapping</li> <li>• Census</li> </ul>	Staff: 6.1 FTE (24.4%)				

**MARATHON COUNTY  
CONSERVATION, PLANNING AND ZONING DEPARTMENT**

**STAFF**

Director

James Burgener

**Conservation Services**

- Conservation Specialist II Paul Daigle
- Conservation Specialist II Shawn Esser
- Conservation Specialist II Ken Pozorski
- Conservation Specialist II Rob Vesperman
- Conservation Specialist I Kirk Langfoss
- Conservation Specialist I Bill Kolodziej

**Planning Services**

- Envir. Resource Coordin. Andy Johnson
- Facilities Planner/Planner III Daniel Hoenecke
- Comp. Planner/Planner II Diane Wessel
- Transp. Planner/Planner II David Mack

**Technical Services**

- GIS Coordinator Gary Hetzer
- Surveyor Emily Pierce
- Planning Technician Preston Vande Voort
- Surveying Technician **VACANT**

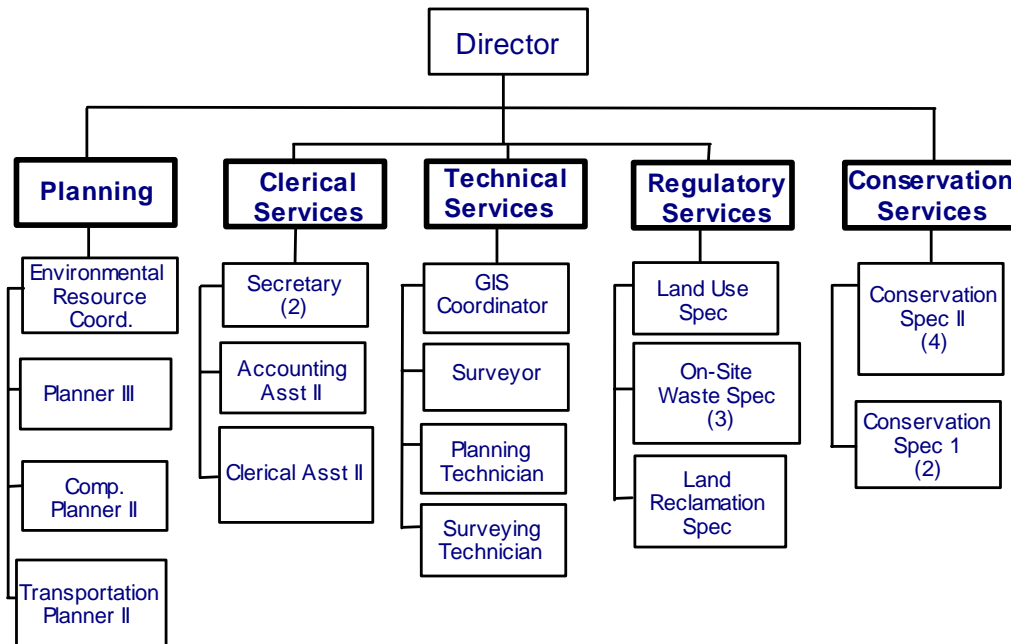
**Regulatory Services**

- Land Use Specialist Mark Clark
- Land Use Specialist Dean Johnson
- On-Site Waste Specialist Dale Dimond
- On-Site Waste Specialist Jacob Sedivy
- Land Reclamation Specialist Justin Cavey

**Clerical Services**

- Secretary Laurie Moritzen
- Secretary Loretta Schultz
- Accounting Assistant II Kathy Monien
- Clerical Assistant II Pam Roemke

**Organizational Chart\***



## TABLE OF CONTENTS

List of Acronyms .....	1
1000 series – Administration.....	3
1302 – Web Page Development/Maintenance .....	4
2100 – Land and Water Resource Management (LWRM) Program.....	5
2101 – Animal Waste and Manure Management Ordinance .....	5
2102 – Priority Watersheds Project (Lower Rib River).....	6
2103 – Management Intensive Grazing (MIG).....	7
2104 – Targeted Resource Management (TRM) Grants) .....	8
2105 – Soil and Water Management Grants.....	9
2106 – Farmland Preservation Program (FPP) Project .....	9
2300 – General Conservation Program .....	11
2301 – Wildlife Damage Program .....	11
2302 – Lake District Projects .....	11
2303 – Tree Planting.....	12
2304 – Gypsy Moth Suppression Program .....	13
2305 – Soil Erosion and Landuse Transect Survey Project.....	13
2306 – Conservation Reserve Enhancement Program (CREP) Project.....	14
2400 – Sewer Service Area (SSA) Planning.....	15
2500 – Wetlands, Shoreland, Floodplain .....	16
2600 – Nonmetallic Mining and Land Reclamation.....	17
3100 – Long Range Transportation Planning .....	18
3101 – Long Range Transportation Plan .....	19
3106 – Transportation System Database.....	20
3111 – Statewide Planning Assistance .....	20
3201 – Short Range Transportation Planning.....	22
3202 – Short Range Transit Planning.....	24
3301 – Transportation Improvement Program (TIP) .....	25
3900 – Administration and Public Relations .....	26
3901 – Transit Development Program (TDP) .....	28
4100 – Comprehensive Planning.....	29
4101 – Comprehensive Planning: County Implementation.....	30
4102 – Comprehensive Planning: Municipal Implementation .....	31
4500 – Comprehensive Zoning.....	33
4501 – Zoning Ordinance Amendments .....	34
4502 – Land Division Regulations Program.....	35
4503 – Livestock Facilities Licensing Ordinance .....	36
4600 – Agricultural Lands Preservation .....	37
4700 – Surveying.....	38
4808 – Land Information Program .....	39
4900 – Geographic Information System (GIS).....	41
4901 – Digital Land Use/Cover Map of Marathon County.....	42
4902 – Digital Address Map of Marathon County .....	43
4903 – Tax Parcel Mapping .....	44
4904 – Photography-Imaging.....	44
4905 – Application Development .....	44
4906 – Other Related Geographic Information System (GIS).....	45
4907 – Geographic Information System (GIS) Aerial Photography .....	46
4908 – E911 Geographic Information System (GIS).....	46

4909 – Geographic Information System (GIS) Internet Mapping .....	46
6201 – Storm Water Management .....	47
6300 – On-Site Waste .....	48
6301 – On-Site Waste - Wisconsin Fund .....	49
7102 – Economic Development .....	50
8000 – Current Planning .....	51
8100 – Zone Change Review .....	52
8200 – Subdivision (Plat Review) / Certified Survey Map (CSM) Review.....	53
8500 – Official Mapping .....	54
8702 – Census .....	55
8802 – Digital Aerial Photography/Remote Sensing .....	56
8803 – Hazard Mitigation Planning .....	57
8901 – Address System Maintenance and Enhancement .....	59

## List of Acronyms

AWO – Animal Waste Ordinance	POWTS – Private On-Ste Waste Treatment Systems
BMP – Best Management Practices	QA/QC – Quality Assurance/Quality Control
CIP – Capital Improvement Program	RFP – Request for Proposals
CNMP – Comprehensive Nutrient Management Program	ROPA – Results Oriented Performance Appraisals
CPZ – Department of Conservation, Planning and Zoning (Marathon County)	SSA – Sewer Service Area
CREP – Conservation Reserve Enhancement Program	STH – State Trunk Highway
CTPP – Census Transportation Planning Package	STP – Surface Transportation Program
DATCP – Dept. of Agriculture, Trade and Consumer Protection	TAC – Technical Advisory Committee
FHWA – Federal Highway Administration	TDP – Transit Development Plan (Wausau Area Transit System)
FPP – Farmland Preservation Program	TEA-21 – Transportation Equity Act for the 21 <sup>st</sup> Century
GIS – Geographical Information System	TIP – Transportation Improvement Program (Marathon County)
GPS – Global Positioning System	TRM – Targeted Resource Management
ISTEA – Intermodal Surface Transportation Efficiency Act (later revised to TEA-21)	USDA – United States Department of Agriculture
LIC – Land Information Committee	USDA-APHIS-WS – United States Dept. of Ag.-Animal and Plant Health Inspection Service-Wildlife Service
LRTTP – Long Range Transportation Plan (Prepared by the Wausau Metro Planning Organization for the Metro area)	USDA-NRCS – USDA Natural Resources and Conservation Services
LWRM – Land and Water Resource Management	USH – U.S. Highway
MCPC – Marathon County Planning Commission	UWEX – University of Wisconsin Extension Service
MIG – Management Intensive Grazing	UWMC – University of Wisconsin-Marathon County
MPO – Wausau Area Metropolitan Planning Organization	WATS – Wausau Area Transit System
NRCS – Natural Resources and Conservation Services	WisDNR – Wisconsin Department of Natural Resources
NOD – Notice of Discharge	WisDOT – Wisconsin Department of Transportation
NTC – Northcentral Technical College	WPDES – Wisconsin Pollution Discharge Elimination System



**Project No. / Title:** 1000 Series – Administration (as appropriate)

**Goal(s):**

- Provide effective staff support for Committee/Commission activities as appropriate.
- Provide staff with development opportunities as appropriate.
- Provide effective administration of the office of the Marathon County Conservation, Planning and Zoning (CPZ) Department.
- Develop the appropriate budget and work program documents.
- Provide personnel administration (hiring, promotion, discipline, and training) of department staff.
- Track the annual Work Program and monitor the annual departmental budget, as required.
- Maintain effective bookkeeping and record keeping management.
- Adhere to County purchasing policies and procedures.
- Maintain contact with community through attending community groups meetings regarding issues of interest to the department.
- Meet the mission of the department.
- Ensure that the County's core values are reflected by the work accomplished by the department.

**Methodology:** Administration of the department will be the principal responsibility of the CPZ Director with the support of the Director, Division Supervisors, and clerical and administrative staff.

**Product(s)/Objective(s):** Coordinate an effective and efficient departmental operation. Provide for a well trained staff. Prepare the annual budget and work program. Purchase appropriate materials and supplies to support programs of the CPZ Department. Provide proper supervision to the overall operation of the department and assignment of proper staff support to assigned projects and programs.

**Estimated Person-weeks:** 42.5 (8 Director, 5.5 Supervisor(s), 6 Environmental Resources Coordinator, 1 GIS Coordinator, 3 Planners, 1 Planning Technician, 8 Accounting Assistant, 10 Secretarial)

**Project No. / Title:** 1302 – Web Page Development/Maintenance

**Goal(s):**

- Provide the public with information pertaining to the CPZ Department's activities/projects utilizing the Internet and the County's Web Site.

**Previous Work:** Marathon County has a Web Site that has been published to the Internet containing information about CPZ Department activities.

**Methodology:** Department staff will oversee, develop, edit and publish data/information directly to the CPZ Web Page via administration tools provided by the City-County Information Technology Commission.

**Product(s)/Objective(s):** Documents, images, maps, brochures, announcements, agendas/minutes and general information will be published to the County CPZ Web Page.

**Estimated Person-weeks:** 4.5 (1.5 Comprehensive Planner, 3 GIS Coordinator)

**Project No. / Title: 2100 – Land and Water Resource Management (LWRM) Program**

**Goals/Outcomes:**

- Nutrient and sediment delivery to the County’s surface and ground waters from livestock feedlots, waste storage facilities, feed storage facilities, cropland and the land spreading of manure is reduced.
- Economic development opportunities and profitability for agricultural producers is supported through education, programming, technical assistance and grant assistance.
- Working Lands (cropland and woodland) are preserved against land use conversion.
- Quality of surface and ground waters is improved.
- Big Eau Pleine Watershed Planning.

The Land and Water Resource Management (LWRM) program is implemented through priorities outlined in the Land and Water Resource Management (LWRM) Plan. Priorities are established by the Land Conservation and Zoning Committee to meet County resource management outcomes and to assure landowner compliance with ordinances, conservation program participation, and state agricultural standards.

This LWRM program has six (6) projects with targeted activities and outputs:

- 2101 Waste Storage Facility and Nutrient Management Ordinance
- 2102 Lower Big Rib River Priority Watersheds Project
- 2103 Management Intensive Grazing (MIG) Project
- 2104 Targeted Resource Management (TRM) Grants
- 2105 Soil and Water Management (SWRM) Grants
- 2106 Farmland Preservation Program (FPP) Project

**Estimated Person-weeks:** 10 (8 Environmental Resources Coordinator, 2 Secretarial)

---

---

**Project No. / Title: 2101 – Waste Storage Facility and Nutrient Management Ordinance**

**Goals/Purposes:**

- To regulate the construction, modification and management of livestock waste storage facilities
- To regulate the application and distribution of livestock waste onto cropland.
- To regulate the closure of abandoned waste storage facilities.

**Previous Work:** The CPZ Department has provided administrative and technical support to the Waste Storage Facility and Nutrient Management Ordinance since 1985. To date, staff has issued over 266 permits to construct manure storage facilities that store approximately 187 million gallons of waste. In addition, staff has issued nearly 73 permits for the closure of idle manure storage facilities with eight (8) issued in 2009.

**Methodology/Activities:**

- Develop management and site assessments for permit applications.
- Review and approve design and construction plans.
- Issue and administer permits.

- Inspect and certify construction projects.
- Review, approve, and monitor nutrient management plans.
- Provide Nutrient Management Plan Technical Assistance and Education to landowners and private sector.
- Investigate pollutant discharge complaints and violations to local ordinances and state agricultural performance standards and prohibitions.

***Product(s)/Outputs:***

- 10-30 Permit applications administered.
- 10-15 closures of abandoned waste storage facilities
- 400-500 certifications for Nutrient Management Plan(s) compliance.
- 8-12 Wis. Pollution Discharge Elimination System (WPDES) permits reviewed.
- Outcome Measurement Reports.
- 20-30 program compliance audits/evaluations.
- 20-50 state cost-share grants.
- Compliance tracked for ordinance and state agricultural performance standards and prohibitions.
- 5-10 Investigations of complaints for state performance standards violation.

***Estimated Person-weeks:*** 75 (1 Director, 2 Supervisors, 3 Environmental Resources Coordinator, 68 Conservation Specialists, 1 Accounting Assisant) + 2 NRCS, 2 DATCP Engineer

---

***Project No. / Title:*** 2102 – Priority Watersheds Project (Lower Big Rib River)

***Goals/Purposes:***

- Reduce nutrient and sediment loading to the Lower Big Rib River from barnyards, pastured stream banks, cropland, and municipal storm water runoff.
- Reduce nutrient loading to the groundwater by closing abandoned manure storage facilities, closing abandoned or unused private wells, and nutrient management.
- Provide technical and financial assistance to landowners to install Best Management Practices (BMP).
- Education of landowners, agronomists, and local municipal leaders about water quality concerns caused by land use practices.
- Enhance biological uses of all streams by improving water quality and aquatic habitat.
- Restore degraded and converted wetlands in the watershed.

***Previous Work:*** Marathon County and the WisDNR have administered the Priority Watershed Program in five (5) different priority watersheds in Marathon County since 1988. Over \$5.5 million have been distributed to farmers and landowners, along with thousands of hours of planning and designing have been provided to implement conservation practices.

CPZ has administered over 325 cost share agreements to 250 landowners to install best management practices. The Lower Big Rib River (LRR) project is scheduled to end on December 31, 2009.

**Methodology/Activities:**

- CPZ staff conducts an inventory of all potential non-point source pollutants on all active farms within the watershed boundary. Sources include barnyard runoff, winter spread manure, cropland erosion, storm water runoff from urban areas, and stream bank erosion.
- CPZ and DNR set pollutant loading reduction goals for the project. Landowners with the greatest potential for contributing non-point source pollutants to surface or groundwater are eligible for cost share monies to install Best Management Practices (BMP).
- CPZ develops and administers agreements and grants for participants.

**Products//Outputs:**

- Monitor landowner compliance of previously installed BMP's.
- Annual accomplishment report.

**Estimated Person-weeks:** 14 (3 Environmental Resources Coordinator, 10 Conservation Specialists, 1 Accounting Assistant) + 1 DATCP, 2 NRCS

---

**Project No. / Title:** 2103 – Management Intensive Grazing (MIG)

**Goals/Purposes:**

Promote the feasibility of grazing based farming as a profitable way of farming that enhances lifestyles and protects and improves the environment.

**Previous Work:** In 1993, the Central Wisconsin River Graziers Network was formed to promote managed grazing in Marathon and Lincoln Counties by farmers and agricultural professionals. From 1993 to 1997, County staff, along with UW-Extension staff, used educational events to promote Management Intensive Grazing (MIG). Since 1998, a full time County staff member along with UWEX have been planning, promoting and implementing managed grazing practices in Marathon and Lincoln Counties. Since 1998, 266 managed grazing plans on 20,617 acres have been completed and implemented. To date, over \$1.7 million in grants and incentives has been distributed to landowners to install conservation practices. An additional \$895,284 from local, state, and federal sources have been secured for project delivery.

**Methodology/Activities:**

- Apply for and administer technical and education state and federal grants.
- Provide educational outreach and technical assistance.
- Coordinate (with UWEX) the grazing network activities.
- Develop outcome measurement reports.
- Coordinate federal and state cost-share grants and services for best management practices.
- Develop and implement managed intensive plans for farmers.

**Product(s)/Outputs:**

- Technical Support:
  - Fifteen (15) Management Intensive Grazing (MIG) plans on 1500 acres will be developed each year. Provide one-on-one planning assistance to farmers.
  - Two (2) no-till drills will be rented to graziers for pasture renovation.

- 20-30 “adopting” graziers (1-3 years experience) will be provided one-on-one follow-up technical assistance for implementation assistance.
- 30-40 grazing operations will be evaluated for program status compliance.
- Education:
  - Educate farmers, lenders, educators and other agricultural professionals about Management Intensive Grazing (MIG) through pasture walks, winter meetings and conferences, local press releases.
  - Ten (10) pasture walks will be held in Marathon and Lincoln Counties.
  - Twelve (12) educational newsletters will be published annually.
  - Annual outcome measurement report for each county.

**Estimated Person-weeks:** 51 (.5 Director, .5 Supervisor, 2 Environmental Resources Coordinator, 47 Conservation Specialists, 1 Accounting Assistant)

**Project No. / Title:** 2104 – Targeted Resource Management (TRM) Grants

**Goals/Purposes:**

- Identify and correct significant large scale natural resource problems that are impacting water quality as a result of agricultural runoff.
- Leverage state cost-share funding and enforcement authority to correct large scale watershed problems or regional concerns.

**Previous Work:** The WisDNR initiated the Targeted Resource Management (TRM) Grant program in 2002. Since that time, CPZ staff has successfully secured 34 grants for county landowners representing nearly \$1.32 million. These grants will provide assistance for Best Management Practice (BMP) such as closure of waste storage facilities and construction of waste storage facilities in impacted watersheds. The TRM project will provide engineering and implementation for twelve (12) projects in 2010.

**Methodology:**

- Identify, rank, and prioritize potential Targeted Resource Management (TRM) projects.
- Submit and administer applications for TRM projects.
- In partnership with WisDNR, issue “Notice of Discharge” (NOD) for identified projects.
- Track resource accomplishments.

**Product(s)/Objective(s):**

- Develop cost-share contracts for twelve (12) TRM projects.
- Design and engineering plans for twelve (12) TRM projects.
- Install Best Management Practices (BMP) to correct Notice of Discharge (NOD) concerns for twelve (12) projects.
- Identify, rank, and select projects for future TRM applications.
- Submit new applications for three (3) to four (4) TRM grants projects.

**Estimated Person-weeks:** 27 (4 Environmental Coordinator, 22 Conservationist Specialists, 1 Accounting Assistant) + 2 UW-Extension.

**Project No. / Title: 2105 – Soil and Water Management Grants**

**Goals/Purposes:**

- Provide technical and cost-share assistance for landowners with significant, small scale resource problems that impact the quality of soil and water resources as a result of agricultural discharges.
- Focus leverage state and federal cost-share money and technical assistance for ~~to~~ intensive grazing practices, closure of abandoned manure lagoons, and other projects that have not received a Notice of Discharge (NOD) from the WisDNR.

**Previous Work:** CPZ staff has developed 131 contracts during 2002-2009 representing nearly \$811,000. Projects have involved Intensive Grazing, manure storage facility abandonment, nutrient management planning and waste management systems.

**Methodology/Activities:** CPZ staff will:

- Develop projects for Soil and Water Resource Management (SWRM) grant that comply with performance standards and ordinances.
- Provide tracking and project assessment to determine compliance and project impacts.
- Prepare annual accounting and accomplishment reports.
- Provide technical assistance for Best Management Practices (BMP) designs.
- Develop cost-share contracts.

**Project(s)/Outputs:**

- Information and Education Plan.
- 10-20 designs for BMP implementation.
- 10-20 cost-share agreements and contracts.
- Report that identifies and prioritizes closure schedule for waste storage facilities.
- Funding strategy that identifies, ranks, and selects projects for funding.
- Identify waste storage facilities that need safety and fencing components installed.
- 10-25 cost-share agreements for nutrient management planning.

**Estimated Person-weeks:** 28 (3 Environmental Resources Coordinator, 24 Conservationists, 1 Accounting Assistant)

---

**Project No. / Title: 2106 – Farmland Preservation Program (FPP) Project / Working Lands Initiative**

**Goals/Purpose:**

- Maintain rural land in agricultural use.
- Preserve soil and surface water quality by implementing and maintaining conservation Best Management Practices.
- Provide tax credits to private owners of rural property as an incentive to participate in the program.
- Assure that participants in Farmland Preservation Program (FPP) comply with the Marathon County Soil and Water Conservation Policy for Farmland Preservation Program (FPP) and state Agricultural Performance Standards and Prohibitions.

**Previous Work:** The Farmland Preservation Program (FPP) has been an on-going, state/local partnership program since 1978. County landowner participation has varied over time, with current participation at nearly 500 landowners on 85,000 acres of rural land. The program provided tax credits to 307 participant farms in 2008 each averaging \$650 (total \$199,467) and has provided over \$9.7 million of tax credit since the program began. The program had a 16.4% participation rate in tax YR 2007.

**Methodology/Activities:**

- Develop and/or update Conservation Plans for all landowners.
- Perform 100-125 Status Reviews to ensure compliance with Program Standards.
- Track program participation including zoning certificates, transfers, and relinquishments.
- Conduct an annual self-certification.
- Assist landowners and private sector with Nutrient Management education and plan development.

**Product(s)/Outputs:**

- Develop, revise, and/or update 30 Conservation plans (7,500 acres).
- 25% Status Review of Conservation plans (100-1250 plans).
- Administer fort (40) zoning certificates, 20 ownership transfers, and 20 relinquishments.
- Review and certify 400-500 annual self-certifications and annual crop reports.
- Information and Education Plan for "Working Lands" program proposal.
- Proposal to revise Agricultural Preservation Plan.
- Thirty (30) Nutrient Management Plans

**Estimated Persons-weeks:** 70 (1 Director, 1 Supervisor, 4 Environmental Resources Coordinator, 61 Conservation Specialists, 3 Accounting Assistant)  
+ 1 NRCS

***Project No. / Title:* 2300 – General Conservation Program**

This element has six (6) projects with targeted activities and outputs:

- 2301 Wildlife Damage Program
- 2302 Lake District Projects
- 2303 Tree Planting
- 2304 Gypsy Moth Suppression Program
- 2305 Soil Erosion and Land Use Transect Survey Project
- 2306 Conservation Reserve Enhancement Program (CREP) Project

---

---

***Project No. / Title:* 2301 – Wildlife Damage Program**

***Goals/Purposes:***

- Reduce commodity crop losses caused by wildlife.
- Provide financial relief for crop damage caused by specific wildlife types
- Provide protein source to local food pantries.

***Previous Work:*** In 1986, the County assumed full administrative responsibility for this state and federally funded grant program. In 1993, the County contracted with USDA–Animal and Plant Health Inspection Service–Wildlife Services (USDA-APHIS-WS) for the implementation of the program.

***Methodology/Activities:***

- Provide abatement techniques, abatement materials, shooting permits and financial compensation to landowners within the county that suffer crop damage as a result of wildlife activity.
- Administer the venison donation program with local processors and food pantries.

***Products/Outputs:***

- 40 to 60 crop damage evaluations.
- 20-30 shooting permits issued to landowners to harvest nuisance deer.
- \$52-70,000 in crop damage claims administered.
- 125-160 venison donations processed.

**Estimated Person-weeks:** 4 (.5 Director, .5 Supervisor, 2 Environmental Resource Coordinator, 1 Accounting Assistant) and 30 USDA-APHIS-WI

---

---

***Project No. / Title:* 2302 – Lake District Projects**

***Goals/Purposes:***

- Provide protection and rehabilitation to lakes.
- Minimize the eutrophication of specific lakes by reducing pollutants associated with lakeshore residences and upland agricultural activities.
- Evaluate and assess land and water resource conditions of area lakes and reservoirs for the development of conservation education and management plans.

**Previous Work:** CPZ staff has provided technical and educational support to the Mayflower Lake and Big Bass Lake Districts for the purpose of promoting the adoption of sound environmental practices by residents along the respective lakeshores and by agricultural producers located in the drainage areas above the lakes. Districts have been assisted with installing aeration equipment.

**Methodology/Activities:**

- Conduct resource inventories of potential nutrient and pollutant sources.
- Assist District representatives with organizational and management duties.
- Contact agricultural producers in drainage areas of district to assess potential non-point contributing sources.
- Identify agricultural pollutant sources for appropriate corrective projects.
- Attend business and organizational meetings of Mayflower and Bass Lake Districts.

**Product(s)/Outputs:**

- Identify and assess non-point pollution sources adjacent and contributing to lake degradation.
- Report on status of respective lake quality and proposed conservation involvement.

**Estimated Person-weeks:** 8 (3 Environmental Resource Coordinator, 5 Conservationist Specialist) and 1 UW-Extension

---

---

**Project No. / Title:** 2303 – Tree Planting

**Goals/Purpose:** Provide trees, wildlife plantings and technical assistance to landowners and units of government for the protection and enhancement of their forestlands, prairies and waters.

**Previous Work:** CPZ staff and WisDNR have provided technical and educational support to county residents for nearly 30 years. DNR directs the sales and distribution of tree and plant materials, as well as organizes the use of available tree planters. Marathon County has owned 2 tree planters for 20 years and rents them to landowners during the spring planting season. The CPZ staff also administers the rental payment invoicing and rental collections. Over the past 5 years, nearly 500,000 trees are planted through this program with nearly 100,000 of those trees planted with the aid of county owned planters.

**Methodology/Activities:**

- Conduct resource inventories of potential users and participants
- Assist DNR staff in promoting forest improvement on private lands.
- Inventory private forestry management needs.
- Rent tree planters to landowner with large scale planting needs.

**Product(s)/Outputs:**

- 30-40,000 trees planted with County planters.
- 5-10 landowners develop tree planting plans with DNR assistance.
- 200-300,000 trees distributed to landowners.
- Report that identifies ownership and use trends for private and public woodland.
- Report on Managed Forest Law trends in Marathon County.

**Estimated Person-weeks:** 2 (3 Environmental Resource Coordinator, 1 Conservation Specialist), 9 DNR Foresters, and 1 UW-Extension

---

---

**Project No. / Title:** 2304 – Gypsy Moth Suppression Program

**Goals/Purposes:**

- Provide program information.
- Provide assistance to Marathon County's communities to enable them to participate in the DNR gypsy moth suppression program.
- Coordinate the suppression of gypsy moths Marathon County.
- Ensure compliance with DNR program requirements for Marathon County's communities.

**Previous Work:** The Director attended a DNR sponsored seminar. The Director has invited all municipalities to a workshop on the program in Marathon County. The Director coordinated the submittal of applications from municipalities for the 2009 spray program.

**Methodology:** The Director will solicit participation from municipalities in Marathon County, provide technical assistance to the communities and be a liaison to the DNR.

**Estimated Person-weeks:** 5 (2 Supervisor, 1 Accounting Assistant, 2 Secretary)

---

---

**Project No. / Title:** 2305 – Soil Erosion and Land Use Transect Survey Project

**Goals/Purpose:**

- Inventory county-wide agricultural cropping trends
- Determine regional soil erosion rate trends and land use changes.

**Previous Work:** The Transect Survey was conducted annually from 1999 to 2004; biennially since 2005. The Survey captures data on 702 cropland sites and 662 land use sites. Statistical analysis is processed by CPZ staff on the cropland and land use data and stored in the County's Geographic Information System (GIS) system.

**Methodology:**

- Random route throughout county was determined prior to first survey in 1999. The same 604 mile route is followed in-field in June by CPZ and Natural Resources and Conservation Services (NRCS) staff.
- Use Global Positioning System (GPS) equipment to navigate to same exact cropland and land use sites each year.
- Cropping practices, specific physical characteristics and land use data are gathered at each site.
- Collected cropland site data is transferred to computer software in the office where statistical queries and reports are generated for federal, state and local use.
- Land use is recorded and updated on the County's Geographic Information System (GIS) system.

- Cropland data is supplied to the Wis. Dept. of Agriculture, Trade and Consumer Protection (DATCP) to track state-wide trends.

**Product(s)/Outputs:**

- Outcome Measurement Report of Soil Erosion trends and Land Use changes.

**Estimated Person-weeks:** 2 (2 Conservation Specialist)

**Project No. / Title:** 2306 – Conservation Reserve Enhancement Program (CREP) Project

**Goals/Purposes:**

- Retire sensitive and/or valuable environmental lands from agricultural production.
- Enroll up to 2,000 acres in program.
- Reduce nutrient runoff of phosphorus and nitrogen by 10% in project area.
- Reduce sediment in runoff by 15% from cropland and pastureland in the project area.

**Previous Work:** As of November 2007: 33 Contracts active, *nearly 650* acres enrolled, \$55,485 of state payments to participants.

**Methodology/Activities:**

- Coordinate with WisDNR and Natural Resources and Conservation Services (NRCS) to determine geographical areas of the county that Conservation Reserve Enhancement Program (CREP) activities and cost-share allocations will be targeted.
- Coordinate with Wis. Dept. of Agriculture, Trade and Consumer Protection (DATCP) and Natural Resources and Conservation Services (NRCS) to process contracts and project documentation including maps, plans, and reports.
- Allocate payments to participants of up to \$810,000.

**Product(s)/Outputs:**

- 1500 acres contracted in 15-year agreements
- 500 acres of land contracted in permanent easements.
- 5-10 landowner contracts.
- 10-20 site and program evaluations.
- Riparian buffers on 50% of the stream miles in the project currently are without buffers
- Annual Outcome Measurement Report.

**Estimated Person-weeks:** 1 (1 Conservationist) + 1 NRCS

**Project No. / Title:** 2400 – Sewer Service Area (SSA) Planning

**Goal(s):**

- Serve as staff to the Water Quality Technical Advisory Committee created by the Metropolitan Planning Commission which serves as the Water Quality Planning Agency for the WisDNR.
- Map the Wausau Urban Area Sewer Service boundary.
- Identify environmentally sensitive areas for exclusion from the sewer service boundary according to guidelines from the WisDNR and agreed upon in the Wausau Urban Area Sewer Service Plan.
- Coordinate the implementation of the Wausau Urban Area Sewer Service Plan update.
- Create a policy for approving future sewer service amendments.
- Create and maintain an informational website on the Wausau Urban Area Sewer Service Plan.

**Previous Work:** The CPZ Department, working with the communities within the Wausau Urban Area, developed the Wausau Urban Area Sewer Service Plan in 1981. Staff has worked with the communities to complete all subsequent amendments. Staff has also determined if proposed sewer extensions are within the current planning boundary. Marathon County was awarded a \$40,000 grant in 2004 from the Department of Natural Resources (DNR) on behalf of the communities in the Wausau Urban Area Sewer Service Area for the purpose of coordinating the update of the Wausau Urban Area Sewer Service Plan for the year 2025. CPZ prepared a request for proposals (RFP), entered into a contract with consultants, provided mapping services, and coordinated sewer service planning efforts with the Marathon County Comprehensive Planning process. The 2025 Wausau Urban Area Sewer Service Plan was approved by the WisDNR in May 2008.

**Methodology:** The Department reviews proposed amendments from participating communities for accuracy and completeness. CPZ staff then submits the proposals to the Marathon County Metropolitan Planning Commission for review. The Metropolitan Planning Commission is responsible for ensuring that proposed amendments are consistent with the intent of the sewer service plan and any local transportation or comprehensive plans, are cost-effective, and protect environmentally sensitive areas. If the above criteria are met, a report is submitted to the WisDNR for final approval. Staff may attend public hearings on proposed amendments, prepare reports from materials submitted by the initiator of the amendment, and identify sensitive areas using aerial photography, Geographic Information System (GIS) data layers, and reports from other agencies. Upon final approval, the CPZ Department notifies the parties involved and maps the boundary accordingly.

**Product(s)/Objective(s):** Implementation of the 2025 Wausau Urban Area Sewer Service Plan, letters of conformance to the sewer service plan, maps, and occasional presentations.

**Estimated Person-weeks:** 3 (2 Planner, 1 Secretarial)

**Project No. / Title:** 2500 – Wetlands, Shoreland, Floodplain

**Goal(s):** Shoreland and floodplain zoning was adopted by Marathon County to protect the ecologically sensitive shoreline and floodplain areas which are frequently the most sought-after sites for intensive use and development. Shoreland is land lying within 1,000 feet of lakes, ponds and flowages, land within a floodplain, and land within 300 feet of a navigable stream. Floodplains are those lands generally adjacent to rivers and streams that are inundated by the regional flood. Wetlands located in these shorelands and floodplains have been under county jurisdiction since 1983.

**Previous Work:** Since County Board adoption of Shoreland and Floodplain Zoning in 1969 and subsequent inclusion of wetland regulations in 1983, the Department has been administering the rules in all of the unincorporated areas of Marathon County.

**Methodology:** Administration of these programs consists of enforcement and educational activities. Enforcement takes the form of permit issuance for construction and earth work, follow-up through on-site inspections, and, when required, referral of violations to Corporation Counsel for prosecution. Education consists of one-on-one discussions with land owners, presentations to various groups and mailing an information packet to new water front property owners. Appeals of administrative decisions, and in some cases variance requests and special exception permits, are processed by the Marathon County Board of Adjustment through a public hearing process with assistance from Regulatory and Support Services staff.

**Product(s)/Objective(s):** Sustainable shoreland development that is safe from flooding, protects wetlands, and furthers the objectives of the Public Trust Doctrine, one of the State's founding documents.

**Estimated Person-weeks:** 62.8 (7 Director, 36.4 Land Use Specialists, 12.4 Land Reclamation Specialist, 1 Conservationist, 5 Secretarial, 1 Clerical)

***Project No. / Title:*** 2600 – Nonmetallic Mining and Land Reclamation

***Goal(s):*** The Nonmetallic Mining Reclamation program regulates site repair of nonmetallic mining after removal of minerals such as clay, granite, sand and gravel, such that the site will be restored to a purposeful and acceptable landscape appearance and use.

***Previous Work:*** In 1989, Marathon County adopted the first county-wide reclamation ordinance in the State. Current state-wide rules in Wis. Admin. Code NR135 are based on that Ordinance. This Ordinance is applicable to all unincorporated as well as incorporated areas of Marathon County.

***Methodology:*** This program consists of enforcement and educational activities. Enforcement takes the form of permit issuance for nonmetallic mining and, when required, referral of violations to Corporation Counsel for prosecution. Education consists of one-on-one discussions with landowners, people in the mining industry and presentations to various groups. Appeals of administrative decisions, and in some cases variance requests and special exception permits, are processed by the Marathon County Board of Adjustment through a public hearing process with assistance from Regulatory and Support Services staff.

***Product(s)/Objective(s):*** Reclaimed mine sites that are aesthetically, environmentally and economically beneficial to the property owner and the County.

***Estimated Person-weeks:*** 38.6 (1.5 Director, .5 Supervisor, 2.4 Land Use Specialist, 22.2 Land Reclamation Specialist, 12 Secretarial)

**Project No. / Title:** 3100 – Long Range Transportation Planning

**Goal(s):**

Improve mobility and safety within the Wausau Metropolitan Area through systematic transportation planning of a multimodal Long Range Transportation Plan. This element has three (3) sub-components, each comprising a separate program constituent of this work element:

- 3101 Long Range Transportation Plan
- 3106 Transportation System Database
- 3111 Statewide Planning Assistance

**Previous Work:** The Transportation Element of the *1965 Comprehensive Plan for the Wausau Urban Area* was updated in 1974. Until 1987, planning activities were limited to single programs and short range plans on a case-by-case basis. Work on an interim plan began in 1988 with participation of the Technical Advisory Committee. Portions of the 1990 Census results were obtained in 1993 and the balance of the data was received in 1994. Other necessary base data was developed in 1993 by MPO staff. MPO staff met with the Wausau MPO communities in 1991 and 1992 to solicit input on the *Interim Transportation Sketch Plan*, and transportation and land use issues for the update to the Long Range Transportation Plan (LRTP).

In June 1996, the MPO Policy Committee was reconstituted into the Marathon County Metropolitan Planning Commission. In October 1996, the Marathon County Metropolitan Planning Commission approved the Long Range Transportation Plan (LRTP) for the Wausau Metropolitan Area.

In June 2000, the MPO adopted the Local Arterial Circulation Plan. This plan was developed with extensive public and community involvement to begin the process of updating the Long Range Transportation Plan.

In the fall of 2003, the MPO hired URS, Inc. to develop the update to the LRTP. This LRTP was completed in May 2006. This update has a planning period ending in 2035.

In 2009, the MPO completed the Bicycle and Pedestrian Plan for the Wausau Metro Area. This is a 20 year plan that will address the needs and approaches to continue the development of a network of facilities to accommodate non-motorized travel.

**Methodology:** MPO staff assisted URS, Inc. in developing the transportation network model which simulates year 2000 conditions. The model inputs include roadway, land use, population, housing and employment data. The model was calibrated to resemble the existing average daily traffic counts. Forecasts of 2035 land use, population, housing and employment were developed and entered into the model. Refined land use and transportation alternatives were developed to illustrate potential future scenarios. The alternatives were imported into the model and preliminary infrastructure needs and costs determined. In 2006, refinements were made to the land use in the metro area specifically near the Highway 51/29 corridor. During the LRTP development, a new transportation network model was created to better forecast traffic in the urban area over the next 30 years.

***Project No. / Title:*** 3101 – Long Range Transportation Plan

**Goal(s):** SAFETEA-LU is the new Transportation Authorization Bill that requires Long Range Transportation Planning for the MPO. Work items in 2010 include working with citizens, local staff, WisDOT, and consultants that aid in the implementation of the Long Range Transportation Plan (LRTP) for the Wausau Metropolitan Area. In 2010, MPO staff will use the LRTP and continue its implementation. The development of the LRTP will maintain a 20 year planning horizon to ensure eligible use of federal funding. The following planning activities are incorporated into the work program:

- Boundary review of urbanized area, metropolitan planning, sewer service,
- Review and update current functional class system,
- Compile and generate GIS data for this planning purpose,
- Update the MPO Land Use databases and maps, and
- Create Performance Measures to monitor and track transportation and land use impacts and planning assumptions that are related to the projects, policies, and recommendations in the Long Range Transportation Plan.
- Begin the 2011 LRTP update with consultation with federal and state agencies on the environmental impacts.

This document reaffirms the LRTP's plan elements. The forecasts from the travel modeling of the area and the US Census have been obtained from the LRTP process. To provide the best up-to-date plan for the area, the Plan has forecasts for the year 2035.

The Public Participation Process for the MPO was created in 2006. This Plan addresses all facets of the public involvement process as it relates to the information and documents prepared by the MPO. As established in the Plan, the MPO will undertake the:

- Evaluation of the effectiveness of existing involvement processes,
- Development and enhancement of the analytical capabilities for assessing impact distributions of transportation programs, policies and activities established in the transportation plan and the TIP, and
- Assurance of SAFETEA-LU compliance.

Other LRTP implementation activities will include working with the US Census Bureau to update and adjust the Urbanized Area Boundary and the Metropolitan Planning Area Boundary.

Staff will continue to work with the Bicycle and Pedestrian sub-committee on the implementation of the Bicycle and Pedestrian Plan for the Wausau Metro Area.

WisDOT will consult with the MPO on safety issues on State Highways and the MPO will assist with, where possible, the implementation of the Strategic Highway Safety Plan.

Staff will begin to discuss the impacts Freight issues in the area have for inclusion in the next LRTP.

As relates to the Presidential Executive Order regarding environmental justice, the MPO will also address the identification and involvement of minority and low-income populations by the development of improved strategies for engaging minority and low-income populations through

public involvement as it relates to the accessibility to major destinations identified by the minority and low-income populations.

---

---

***Project No. / Title:*** 3106 – Transportation System Database

**Goal(s):** MPO staff work items include continued development and maintenance of a database on land use and the transportation system in the Wausau Metropolitan Area. The database includes a roadway attribute file and TAZ boundaries with all data associated with them linked to the graphic elements of the County's Geographic Information System (GIS). As transportation data is collected, a major objective will be to maintain a format compatible with the County's GIS to allow the information to be conveniently accessed for a wide range of planning applications.

One of those applications and ways to disseminate this information is use the Marathon County Web Site. Staff will work to create a unique web page to allow people to gain more access and information for this MPO.

Marathon County will obtain high resolution digital orthophotography in 2010. This information provides the basis for developing the 2010 land cover mapping for the County and the MPO. This land cover will be used for any traffic forecast modeling being generated for the MPO and WisDOT.

The information in the area traffic model was used for the LRTP and may be used by the MPO and WisDOT to evaluate future projects and policies. Traffic Impact Analysis on new roadways and development projects, as well as new transit routes, will be addressed.

---

---

***Project No. / Title:*** 3111 – Statewide Planning Assistance

**Goal(s):** The MPO staff coordinates activities between the MPO and WisDOT regarding the development and implementation of state transportation plans and coordinates, to the extent possible, the Wausau Area Long Range Transportation Plan with the adopted statewide strategies. The MPO also works with FHWA and WisDOT to coordinate any efforts related to the federal Surface Transportation Program (STP), National Highway System (NHS), Interstate Maintenance System (IM), and Bridge Replacement and Rehabilitation (BR). The MPO will assist WisDOT in the development and review of Wisconsin's statewide transportation plan, "Connections 2030." This may also include work on the transit system needs, ITS architecture guidelines, local road needs, and state highway capacity needs. The MPO will work with WisDOT and provide technical assistance in the development of a corridor study along STH 29 from Abbotsford to Wausau.

**Product:** The staff will begin the preliminary work on studies that will become the basis for the MPO to create a number of new policies. These studies will look at congestion management with issues like Intelligent Transportation Systems (ITS), traffic signals and their related policies; safety issues with crash data of area hot spots; freight movements and related impacts; air quality and environmental concerns; and the financial costs of the operation and maintenance of the policies that will be established.

Staff will continue to monitor projects identified in the LRTP throughout the year. These projects may have begun their implementation phase, whether it is preliminary study, design or actual

reconstruction or new construction. These projects will be assessed to determine whether they are proceeding as identified in the LRTP.

The MPO staff will help coordinate with the County and individual MPO communities on Comprehensive Planning. This will help maintain consistency in the data and information between the communities and the MPO. Any land use information and decisions made by the County and the individual communities will benefit the MPO when creating or utilizing land use information for the Long Range Transportation Plan update.

MPO staff will continue the implementation the area-wide Bicycle/Pedestrian Plan. The Bicycle and Pedestrian sub-committee of the MPO oversees the implementation of the plan.

**Time Schedule**

All Year	Highway 51/29 construction assistance
All Year	LRTP implementation work
All Year	Assist WisDOT in Connections 2030 Plan
All Year	LRTP's SAFETEA-LU Compliance
All Year	MPO Area Bicycle/Pedestrian Plan Implementation
Jan. - June	Adjust Urbanized Area and Metropolitan Planning Boundaries
All Year	Freight issues analysis
All Year	Environmental Consultation

***Estimated Person-weeks:*** 12 (1 Supervisor, 8 Planner, 2 Secretarial, 1 Planning Technician)

***Project No. / Title:*** 3201 – Short Range Transportation Planning

***Goal(s):*** Develop short range transportation plans which address immediate transportation needs of the MPO communities. These plans are developed in conjunction with, or as a result of, the recommendations of the Long Range Transportation Plan.

***Previous Work:*** Short Range projects have been developed in response to the requests made by the MPO communities. Examples of previous projects include access control plans for Stewart Avenue and the Town of Weston; impact studies; river crossing feasibility for the Rib River; Cedar Creek Interchange analysis; traffic analysis and intersection turning movement studies, and assistance with preliminary design on road construction projects.

***Methodology:*** This program consists of strategies to address short-range transportation concerns and issues as they arise. Strategies may include studies of traffic flow and operation improvements for arterials and collectors; development of plans to manage and control access to principal and minor arterials; development of plans to improve safety of motorists, bicyclists, and pedestrians; and traffic impact studies for proposed land use developments as requested by the MPO communities. In accordance with the multimodal emphasis of SAFETEA-LU, all system management plans will include multimodal analysis. Implementations of management systems identified in the LRTP also generate Short Range Planning projects. Intelligent Transportation System (ITS) strategies will be considered to possibly increase the efficiency of the area transportation system. Use of ITS may help solve transportation problems in the Wausau area as a whole.

***Product(s)/Objective(s):*** Anticipated Short Range Planning projects for 2010 include:

MPO staff will continue the implementation of the LRTP. This will be based on the recommendations set forth in the document. These implementation items will be working with the communities to develop the initial planning or review designs, or assist in public involvement of the projects identified in the LRTP.

MPO staff will assist WisDOT as required, in the continuing development of the Highway 51/29 project. This involvement will primarily be with public involvement. Assistance will be to help disseminate information regarding the County and MPO communities as it relates to the Highway 51/29 project.

MPO staff will utilize elements of the State Highway Safety Plan to inform and request that area communities look at standardizing safety issues regarding operations and maintenance in their community plan.

MPO staff will continue to use ITS strategies in the Wausau area, specifically those associated with the Highway 51/29 project. The I-39 ITS Corridor Strategic Deployment Plan developed by WisDOT will be used. Examples of strategies which may be investigated are message boards, continuous count loop detectors, and bridge de-icing equipment. With the influx of data from the newly deployed technologies, the MPO will be able to utilize more current and realistic information for decision making.

MPO staff will undertake or assist on miscellaneous short range transportation studies requested by the MPO communities, such as: I39 Interchange Access, Central Wisconsin Airport road access needs, the development of a local river crossing at Fox Glove Rd. and

Military Rd. with associated facilities, North WI River Crossing Corridor Study, TIP identified reconstruction projects, grant applications.

MPO staff will create Performance Measures to monitor and track transportation and land use impacts and planning assumptions that are related to the projects, policies, and recommendations in the Long Range Transportation Plan.

**Time Schedule**

As Needed	ITS Strategies
All Year	Highway 51/29 Project
All Year	State Highway Safety Plan involvement
All Year	Development of LRTP Identified projects
All Year	Short Range Studies
All Year	Performance Measures

***Estimated Person-weeks:*** 19 (2 Supervisor, 12 Planner, 2 Secretarial, 3 Planning Technician)

**Project No. / Title:** 3202 – Short Range Transit Planning

**Goal(s):** Provide the Wausau Urbanized Area with reliable transit service; to enhance the efficiency of MetroRide; and to comply with requirements of the Federal Highway Administration (FHWA) and Federal Transit Administration (FTA) as described in the cooperative agreement between the City of Wausau (representing MetroRide), Marathon County (through the Conservation, Planning, and Zoning Department representing the MPO) and WisDOT.

**Previous Work:** MPO staff completed the *Transit Development Program, 1989-1994 for the Wausau Area Transit System* in 1989. MPO staff assisted WATS and a consultant in the preparation of a WATS Route Analysis in 1992. MPO staff assisted WATS in the development of the initial ADA Complementary Paratransit Plan in 1992, and the subsequent 1993 update. In 1993, MPO staff developed an inventory of the 1992 paratransit ridership characteristics including origins and destinations, trip rates, trip times, and trip costs. MPO staff also developed a summary of a paratransit survey that was distributed to the certified paratransit riders in 1993. In 1995, the MPO staff conducted a ridership survey and analysis updating information gathered in 1992. In 1997, MPO staff studied the feasibility of extending transit service to Wausau's far west side and the Wausau West Industrial Park. In 1999, WATS and the MPO contracted to conduct a Transit Development Program (TDP) for the Wausau Area. Service extensions to some surrounding communities were the focus of the recommendations of the study. In 2000, WATS and the MPO contracted to conduct a Paratransit Study for the WATS service area. This study focused on the operations of the Paratransit system in place and how it performs and functions in relation to other transit providers from throughout the state and nation. In 2005, WATS and the MPO contracted to conduct a Transit Development Program (TDP) for the Wausau Area. Service extensions to some surrounding communities were again the focus of the recommendations of the study. The Study was finalized in the summer of 2006. In 2008, WATS renamed themselves to be more of a metropolitan service and not just a Wausau service. The new name is MetroRide.

**Product(s)/Objective(s):** Anticipated 2010 Short Range Transit projects:

MPO staff will continue to work with the Transit Commission and MetroRide staff in reviewing and improving the system efficiency by attending the monthly Transit Commission meetings and performing any needed analysis of the system by means of surveys and special studies. These items will be used to enhance the safety and security of the transit ridership in the Wausau area.

MPO staff will assist MetroRide staff in the implementation of the 2006 Transit Development Program (TDP). Staff will assist by providing data and information, as well as, review information and plans provided by the member communities. Staff will begin the process of creating the next update to the 2006 TDP. This will entail securing funding and establishing a Request for Proposals (RFP) and Consultation selection process.

**Time Schedule:**

Monthly	Commission Meetings
All year	TDP Implementation Assistance
July – Dec.	2011 TDP Development

**Estimated Person-weeks:** 5 (1 Supervisor, 3 Planner, 1 Secretarial)

**Project No. / Title:** 3301 – Transportation Improvement Program (TIP)

**Goal(s):** Develop a Transportation Improvement Program necessary to program 2011-2014 multi modal transportation improvements within the Wausau Metropolitan Area.

**Previous Work:** Transportation Improvement Programs (TIP) have been developed annually since the formation of the Wausau MPO in 1983. The TIP includes federally-funded pedestrian, bicycle, mass transit, and street/highway projects located within the Wausau Metropolitan Area. Annual/biennial elements have been prepared as a component of the TIP to enumerate transportation improvement projects and transit operating and capital needs. The annual TIP contains a section on privatization efforts made by MetroRide and MPO staff.

In 2007, the MPO developed and adopted a policy which is applied to the candidate projects programmed with Surface Transportation Program (STP)/Urban funds. The policy contains eligibility and prioritization criteria which are used in funding the candidate projects.

**Methodology:** Anticipated transportation projects are requested from the MPO communities. Candidate projects for federal funding are screened and prioritized according to the TIP prioritization criteria. The Marathon County Metropolitan Planning Commission reviews the list and the final selection of STP/Urban projects is determined. The draft TIP is distributed to the Planning Commission, public and private transportation providers in the area, and other interested parties. A public informational meeting is conducted on the draft TIP in conformance with the Public Participation Plan for the TIP. The final TIP is developed to identify the projects in the Metropolitan Area which utilize federal highway and federal transit funds, and is sent to WisDOT and the appropriate federal agencies. Public Participation requirements under SAFETEA-LU will result in greater efforts by MPO staff in the public relations category.

**Product(s)/Objective(s):** A 2011-2014 Transportation Improvements Program is to be developed identifying highway, transit, and multimodal projects utilizing federal highway and federal transit funds in the Wausau Metropolitan Area.

**Time Schedule**

May - June	Project Identification
September	Draft TIP Document
October	Final TIP Document
November	Approved TIP submitted to WisDOT

**Estimated Person-weeks:** 6 (1 Supervisor, 2 Planner, 2 Secretarial, 1 Planning Technician)

***Project No. / Title:*** 3900 – Administration and Public Relations

***Goal(s):*** Prepare a year 2011 Unified Planning Work program (UPWP); prepare procedures necessary to carry out the transportation planning activities set forth in the 2011 work program; provide continuous educational opportunities for the MPO staff through attendance at WisDOT, FHWA and FTA sponsored or approved training courses and seminars; provide for technical and industry related publications; provide for public information, public relations and program audits; increase interactions and enhance communications between the public and MPO staff; and cooperate with WisDOT's statewide planning efforts.

***Previous Work:*** MPO staff has coordinated meetings of the Marathon County Metropolitan Planning Commission, prepared the annual UPWP, and attended transportation related meetings, seminars and workshops. Information on area-wide transportation developments and issues has been provided to the public on a regular basis. MPO quarterly progress and annual program reports have been submitted to WisDOT. MPO staff has conducted various planning exercises in response to the metropolitan planning requirements from ISTEPA, TEA-21, and SAFETEA-LU.

***Methodology:*** MPO staff solicits the opinions of the MPO communities on the types of transportation planning activities which should take place in the Wausau Metropolitan Area. A UPWP for 2011 will be developed in response to federal planning requirements and the transportation needs of the MPO communities. Staff attends transportation seminars and workshops promoted, sponsored or recommended by WisDOT, FHWA and FTA for the development and maintenance of continuing, comprehensive transportation planning programs. MPO staff cooperates with WisDOT projects and programs. MPO staff serves as a public source of information on transportation plans and issues including statistical data gathered for various transportation projects.

***Product(s)/Objective(s):*** Preparation of a MPO UPWP for 2011, as well as periodic financial and activity reports. The mid-year review meeting with FHWA and WisDOT regarding the UPWP will be held on May 12, 2010 with the annual review meeting to be scheduled in October 2010. The Wisconsin MPO directors will also be having scheduled meetings on January 26, April 27, July 27, and October 26, 2010 to discuss planning policy, financial and technical issues and concerns. Public awareness of transportation issues and MPO activities will be promoted through *Public Participation Plan for the Marathon County Metropolitan Planning Commission and the Wausau MPO, 2005*. A number of activities are described in the plan to disseminate information to the public and gain their input. A few of these are public meetings, news media coverage of events, news releases, and presentations to various groups, committees, and organizations as well as being presented on Marathon County's Web Site. Time spent on education and training which applies to several categories is charged to this category. Support staff functions are allotted to this category, including recording and preparation of meeting minutes and the maintenance of financial records. In 2010, the MPO will continue with the meeting schedule policy for the Planning Commission. The meetings will be held every second Tuesday of the month at 2:00 pm at 212 River Drive, Wausau, WI. In 2010, these dates will be January 12, February 9, March 9, April 13, May 11, June 8, July 13, August 10, September 14, October 12, November 9, and December 14.

The MPO Technical Advisory Committee will meet, as needed, and the dates and times will be arranged by staff.

***Time Schedule:***

July	Departmental Budget
September	Draft UPWP Document
November	Approved UPWP submitted to WisDOT
Monthly	County Highway Committee Meetings
Monthly	MPO Meetings
Quarterly	Submit reports and invoices
Quarterly	MPO Director's Meetings

***Estimated Person-weeks:*** 18 (1 Director, 1 Supervisor, 10 Planner, 6 Secretarial)

**Project No. / Title:** 3901 – Transit Development Program (TDP)

**Goal(s):** Create an area-wide plan for transit service.

**Methodology:** The MetroRide Transit Commission will oversee the development of the plan. A transit planning consulting firm will be hired to develop and write the plan. Financial assistance from WisDOT's discretionary funds will be used on this project.

**Product:** An area-wide Transit Development Plan.

**Time Schedule:**

July	Solicit consulting firms
September	Contract with firm to begin process
July 2011	Project completion

**Estimated Person-weeks:** 6 (5 Planner, 1 Secretarial)

**Project No. / Title: 4100 – Comprehensive Planning**

**Background and History:** During the 1980's, the CPZ Department provided technical assistance to many communities in a wide array of planning projects. A full time staff person was dedicated to land use planning. Examples include the Rib Mountain Community Development Plan; the Marathon County Functional/Jurisdictional Highway Classification Study; the Kronenwetter Community Development Plan Update, Town of Kronenwetter, Marathon County; Town of Rib Mountain Community Development Block Grant Application, Small Cities Competition; and the Town of Brighton Land Management Plan. In the 1990's, a shift from physical planning to policy planning and capital improvements planning took place. In recent years, the need for comprehensive planning for all levels of government has been recognized. In 2000, the Department again began providing a minimal level of land use planning assistance other than what was provided by the Metropolitan Planning Organization.

In 2001, the CPZ Department began defining the countywide Comprehensive Planning Process to create a County Development Plan that meets the requirements of the “Smart Growth” legislation, §66.1001, Wis. Statutes. Through this intergovernmental planning effort, municipalities created individual comprehensive plans which also meet the requirements of the state statutes.

In 2002, the CPZ Department was successful in securing an \$862,000 FY2002 comprehensive planning grant for the County and the original 53 participating municipalities. The Department created a 2000 land use cover database, and submitted a request for proposals (RFP) for planning consultant services to assist with the Comprehensive Planning Process. In June 2002, the planning consultant firm of URS, Minneapolis, MN, was hired to assist with the creation of the comprehensive plans. The criteria for the Suitability for Development maps was also developed and approved by the Environmental Resources Committee. The Department is staff to the Marathon County Environmental Resources Committee and chairs the Environmental Resources Technical Advisory Committee (TAC).

In 2006, Marathon County adopted the Marathon County Comprehensive Plan. Participating municipalities have adopted their individual comprehensive plan.

**Goal(s):** County and municipal comprehensive plans serve as a guide to plan the future of environmental and community resources. The plans identify goals, objectives, and strategies related to the nine elements referenced in the Comprehensive Planning Legislation: Issues and Opportunities, Housing, Transportation, Utilities and Community Facilities, Agricultural Cultural and Natural Resources, Economic Development, Intergovernmental Cooperation, Land Use, and Implementation.

This element has two (2) sub-components:

- 4101 Marathon County Comprehensive Plan Implementation
- 4102 Municipal Comprehensive Plan Implementation

***Project No. / Title:*** 4101 – Comprehensive Planning: County Implementation

***Goal(s):***

- Complete the action steps identified as the responsibility of CPZ in the action table of the Marathon County Comprehensive Plan.
- Update the implementation section of the Marathon County Comprehensive Plan as needs arise.
- Assist and advise the Environmental Resources Committee on environmental issues.
- Develop a county-wide perspective to land use and environmental issues. This will be accomplished through the county-wide comprehensive planning process and providing Geographic Information System (GIS) and other available data resources for practical use in land use planning and decision making.
- Collaborate with County departments by providing information developed in the Groundwater Management Plan and the land use inventory along with census data, parcel data, population projections and other pertinent data to monitor and update the Marathon County Comprehensive Plan.
- Provide leadership, advocacy, strategies, and support of efforts to protect and enhance environmental and community resources.

***Previous Work:*** CPZ has begun updating applicable ordinances to be consistent with the Marathon County Comprehensive Plan. The department is also working with other departments in achieving the action steps identified in the plan.

***Methodology:***

- Work with other County staff, local municipal governing bodies and municipal plan commissions, as well as state and federal agencies, to implement the County Comprehensive Plan.
- Prioritize the action steps identified in the plan based on cost, available resources, and outcome.
- Update and create applicable ordinances, policies, etc., to achieve the action steps identified in the plan.
- Track the progress of actions of CPZ and identify and report measurable outcomes.
- Identify new actions as needs arise.
- Review and update the current Geographic Information System (GIS) land cover information.
- Base land use related decisions/recommendations on the goals/objectives/policies identified in the Marathon County Comprehensive Plan.
- Develop, distribute, and monitor outcomes of a periodic newsletter (Community Connections) of the Environmental Resources Committee.

***Product(s)/Objectives:***

- Implementation of policies that protect and enhance the environmental and community resources in Marathon County. Policies and practices identified in the Plan include:
  - Farmland
    - Identify farmland most susceptible to conversion
    - Zone active farmland appropriately to encourage farm retention
    - Best Management Practices
  - Non-metallic mining
    - Identify mineral resources

- Encourage registration of mineral resources
- Enforce mine reclamation ordinance
- Water Resources
  - Implement & update groundwater protection guide
  - Enforce shoreland/wetland/floodplain zoning
- Land Use
  - Provide tools for managing and coordinating growth
  - Minimize scattered rural development and preserve rural character
  - Encourage redevelopment of underutilized areas

---

***Project No. / Title:*** 4102 – Comprehensive Planning: Municipal Implementation

***Goal(s):***

- Assist communities in implementing locally adopted Comprehensive Plans.
- Provide technical assistance and educational opportunities to communities.
- Collaborate with local units of government within Marathon County and County departments by providing the information developed in the Groundwater Management Plan and the land use inventory along with census data, parcel data, population projections and other pertinent data to monitor and update community Comprehensive Plans.

***Previous Work:*** The Department has hosted informational workshops on tools communities may use to implement their Comprehensive Plans. The department has also provided communities with sample ordinances to customize to fit their needs. Past topics have included land division/conservation subdivision ordinances, livestock feeding operations regulations, boundary agreements, farmland preservation, plan commissions, zoning amendments, local road management, and regulating outdoor wood boilers, solid waste management, and floodplain zoning/National Flood Insurance Program.

***Methodology:***

- Work with other County staff, local municipal governing bodies and municipal plan commissions, as well as state and federal agencies, to implement the individual comprehensive plans.
- Assist municipalities in their implementation efforts through educational workshops, sample ordinances/resolutions, zoning and plat review.
- Review and update the current Geographic Information System (GIS) land cover information.
- Base land use related decisions/recommendations (re-zone, plat review, etc) on the goals/objectives/policies identified in the municipalities' adopted Comprehensive Plans.
- Staff will hold additional informational workshops on tools. Future subjects identified by the communities include:
  - Extraterritorial zoning/plat review
  - Planned Unit Development (PUD)
  - Condominium Regulations
  - Parkland dedication
  - Wellhead protection
  - Nuisance/junk ordinance
  - Best Management Practices (BMP)
  - Official mapping

***Product(s)/Objectives:***

- A quarterly newsletter “Community Connections” – Mission: Provide leadership, advocacy, strategies, and support of efforts to protect and enhance environmental and community resources.
- Community adopted ordinances, policies and practices that work to achieve the goals and objectives identified in municipal comprehensive plans.

***Estimated Person-Weeks:*** 48 (2 Director, 4 Supervisor, 2 Environmental Resources Coordinator, 3 GIS Coordinator, 27 Planners, 4 Planning Technician, 1 Accounting Assistant, 5 Secretarial)

**Project No. / Title:** 4500 – Comprehensive Zoning

**Goal(s):** The program began in 1971 when the County Board adopted the current Zoning Ordinance. The Department offers zoning to all towns in Marathon County. To date, 18 towns have approved County Zoning and are taking advantage of the county's professional staff and legal services.

**Previous Work:** Since County Board adoption, County Zoning has been made available to towns. The County provides professional and legal support to the towns which have adopted County Zoning and appoints a deputy who resides in the town for routine permit issuance and inspection.

**Methodology:** Administration of this program consists of enforcement and educational activities. Enforcement consists of permit issuance, inspection and, when required, referral to Corporation Counsel for prosecution. Education consists of one-on-one discussions with land owners and builders, meetings with Town Boards, Planning Commissions, and various other groups. Appeals of administrative decisions, and in some cases variance requests and special exception permits, are processed by the Marathon County Board of Adjustment through a public hearing process with assistance from Regulatory and Support Services staff.

**Product(s)/Objective(s):** Sustainable development and land uses that are compatible with surrounding uses.

**Estimated Person-weeks:** 61.3 (7.8 Director, 2 Environmental Resources Coordinator, 30.4 Land Use Specialist, 2.5 Land Reclamation Specialist, 16 Secretarial, 2.6 Clerical)

***Project No. / Title:*** 4501 – Zoning Ordinance Amendments

***Goal(s):*** Maintenance of the Zoning Ordinance and review of proposed District changes (zone changes) to assure that the Zoning Ordinance remains current with Wisconsin Statutes, Administrative Codes and the current policies of the County Board, and complies with the wishes of the Towns which have adopted County Zoning.

***Previous Work:*** Since Ordinance adoption in 1971, review and updating has been a constant effort with amendments submitted for County Board review and approval, at least annually.

***Methodology:*** Ordinance amendments are drafted pursuant to the Goals outlined above.

***Product(s)/Objective(s):*** Maintenance of the Zoning Ordinance assures that a comprehensive review (complete re-write) of the Ordinance will never be required. Review and recommendation provides the Land Conservation and Zoning Committee and County Board with the tools they need to make an informed decision on Ordinance amendments.

***Estimated Person-weeks:*** 1.9 (0.5 Director, 0.4 Land Use Specialist, 1 Secretarial)

**Project No. / Title:** 4502 – Land Division Regulations Program

**Goal(s):** Land division regulations were first adopted by the County Board in the late 1960s. The goal of these regulations is to control the division of land, to encourage the most appropriate use of land, to provide the best possible parcel divisions for human habitation and, through cross compliance review, prevent the division of land into parcels that are not buildable.

**Previous Work:** Beginning in 1989 with amendments to the Land Division Regulations and continuing to the present, all parcels created which are ten (10) acres or less must be surveyed.

**Methodology:** Administration of this program consists of enforcement and educational activities. Enforcement takes the form of survey and subdivision review and, when required, referral of violations to the Corporation Counsel. Education consists of one-on-one discussions with owners, surveyors, and various groups. Appeals of administrative decisions, and in some cases variance requests and special exception permits, are processed by the Marathon County Board of Adjustment through a public hearing process with assistance from Regulatory and Support Services staff.

**Product(s)/Objective(s):** Orderly layout of development tracts, better control for Geographic Information System (GIS) computer mapping, better cross compliance with other regulatory programs through and by the review of parcel splits before development begins.

**Estimated Person-weeks:** 16.2 (5 Director, 4.2 Land Use Specialist, 1 Surveyor, 1 Surveyor Technician, 5 Secretarial)

**Project No. / Title:** 4503 – Livestock Facilities Licensing Ordinance

**Goals/Purposes:**

- Regulate the siting and management of new and expanded livestock facilities with 500 or greater animal units.
- Protect soil and water resources.
- Protect the public's health and safety.

**Previous Work:** CPZ has provided administrative, regulatory, and technical support for conservation programs to minimize the impact of agricultural runoff to surface and ground waters since 1982. The Livestock Facilities Licensing Ordinance is integrated with the Maraton County Waste Storage Facility and Nutrient Management Ordinance and Zoning Code. In 2009, the CPZ Department administered three (3) license applications and provided regulatory compliance monitoring for an additional three (3) license holders..

**Methodology/Activities:**

- Review and administer new license applications.
- Provide monitoring, inspection and certification for regulated activities.
- Review designs and specifications of construction plans, nutrient management plans, and odor management strategies.
- Conduct site visits in response to discharge complaints.

**Product(s)/Outputs:**

- Review the structural designs and management and site assessments for 2-3 new applicants.
- Application approvals for 2-3 applicants.
- Six (6) livestock facility spot-checks and nutrient management plan reviews.
- Six (6) compliance reports for current licensees.
- Annual outcome measurement report.
- Report of findings and documentation for all decisions to the Department of Agriculture, Trade and Consumer Protection per ATCP 51.

**Estimated Person-weeks:** 20 (1 Director, 1 Supervisor, 5 Environmental Resources Coordinator, 13 Conservation Specialists) and 2 DATCP Engineer.

**Project No. / Title:** 4600 – Agricultural Lands Preservation

**Goal(s):** Agricultural preservation, as it relates to the zoning program, began in 1980 with an amendment (addition) to the Zoning Ordinance in the form of the Exclusive Agricultural and Transitional Agricultural Districts. In this context, agricultural preservation is a component of Comprehensive Zoning with the goal of preserving productive agricultural land by preventing conflicts between incompatible uses.

**Previous Work:** Since County Board adoption, Exclusive Ag has been an option for Towns adopting or which have adopted County Zoning. It provides a tool for controlling sprawl development as well as qualifying farmers for credit when filing for state income tax.

**Methodology:** Administration is part of Comprehensive Zoning but in addition Zoning Certificates are completed by CPZ staff to eligible farmers so they may file for the tax credits.

**Product(s)/Objective(s):** The objective for Exclusive Ag Zoning is two fold – to protect productive agricultural land and to provide farmers a tax incentive for preserving their land.

**Estimated Person-weeks:** 2.8 (2.8 Land Use Specialist)

**Project No. / Title:** 4700 – Surveying

**Goal(s):** The county surveyor is responsible for the remonumentation and maintenance of 6,000 government corners in the county, assisting in the administration of Land Division Regulations and occasionally conducting a survey for other units of government.

**Previous Work:** In the late 1800s and early 1900s, the original government corners (section corners and quarter section corners) were set. These are the  $\pm 6,000$  monuments that must be maintained and/or replaced by the County Surveyor. These corners are the control points off of which all surveying and mapping, including Geographic Information System (GIS) mapping, are based.

**Methodology:** Through the use of conventional surveying techniques and advanced global positioning, the County Surveyor and private surveyors find, establish ties to and/or replace government corners.

**Product(s)/Objective(s):** As all surveys are based on government corners, the objective is to provide a sound basis for the work which in turn provides a basis for the County's Geographic Information System (GIS) mapping. Surveys are reviewed to assure that the surveys are properly tied to government corners and that the calculations are correct.

**Estimated Person-weeks:** 58.4 (2.4 Director, 28 Surveyor, 28 Surveyor Technician)

**Project No. / Title:** 4808 – Land Information Program

**Goal(s):**

- Administer grant funds and applications for land record modernization projects under the Wisconsin Land Information Program (WLIP).
- Participate in Land Information Committee (LIC) efforts to coordinate land record modernization in and for Marathon County.
- Review and recommend grant applications written under the Wisconsin Land Information Program (WLIP) by municipalities within Marathon County.
- Prepare a grant application for Marathon County to submit to Wisconsin Land Information Program (WLIP). The subject of the grant application will be determined by the Land Information Committee (LIC). Potential projects may include: Section Corner Coordinate Acquisition, Floodplain Mapping, Information/Data sharing, etc. At this time the dollar amounts available have been limited to \$300 per year for education/training grants as the State has earmarked the bulk of funds towards state initiatives.

**Previous Work:** Marathon County has an approved land record modernization plan on file with the State of Wisconsin. The Plan allowed the County to apply for and receive its first grant award of \$100,000 in 1994. The parcel mapping portion of the grant was completed in December 1995.

Subsequent applications were submitted to, and approved by, the Wisconsin Land Information Board (WLIB) as follows:

- November 1995 – The grant request was for \$66,000 to assist in offsetting the cost and accelerating the development of the Capital Improvement Program (CIP) document imaging project. **Completed**
- November 1997 – The grant request was for \$39,145 for Global Positioning System (GPS) hardware/software to be used by the County Surveyor. **Completed**
- Spring 1999 – The request was for \$16,250 for Benchmark Elevation acquisition. This data is to reside within the CPZ Department and assist with floodplain determinations as well as other surveying uses. This project is being done by a consultant and should be completed by 2000 year end. **Completed**
- Fall 2000 – The request for \$62,446 was for Land Use Mapping and Town Road rights-of-way width determination for those towns in the Metropolitan Planning Organization (MPO). This data will reside in and be developed by the CPZ Department. This grant was approved in November 2000. **Completed**
- Spring 2001 – The grant request for \$27,575 was for Town Road rights-of-way width determination for those towns in the eastern portion of the county. This is a continuation project from the last grant. This grant was approved in May 2001. **Completed**
- Spring 2002 – The grant request for \$17,928 was for Town Road rights-of-way width determination for those towns in the western portion of the county. This is a continuation project from the last grant. Additional funding to complete the project was approved by the Land Information Committee. This grant was approved in April 2002. **Completed**
- Spring 2002 – The Strategic Initiative grant request for \$5,450 was for putting information pertaining to Land Records and Geographic Information System (GIS) on the Internet. This grant was approved in April 2002. **Completed**
- Spring 2003 – The request was for \$37,154 for Benchmark Elevation acquisition. This data is to reside within the CPZ Department and assist with floodplain determinations as

well as other surveying uses. This data is supplemental data to the 1999 Benchmark project. This project will be done by a consultant and should be completed by 2004 year end. **Completed**

The Marathon County Land Records Modernization Plan was updated and submitted to the Wisconsin Land Information Board (WLIB) in the spring of 2005 and approved by peer review in the fall of 2005. The Plan will require an updating in 2010. *All grant funds are now administered by the WIDOA.*

**Methodology:** Department staff will review grant applications and make recommendations to the Land Information Committee concerning grant applications.

**Product(s)/Objective(s):** CPZ staff will develop, with the approval of the LIC, grant applications as WLIP funds become available. CPZ staff will update the Land Records Modernization Plan as needed and submit to the WIDOA, after approval by the LIC.

**Estimated Person-weeks:** 3 (.5 Director, .5 Supervisor, 2 GIS Coordinator)

**Project No. / Title:** 4900 – Geographic Information System (GIS)

**Goal(s):**

- Continue the implementation of the Marathon County Geographic Information System (GIS).
- Continue development of applications for various departments using the Geographic Information System (GIS) and its related databases.
- Increase accessibility of Geographic Information System (GIS) through the development of departmental applications and programs available across the network.
- Assist and advise the Land Information Committee pertaining to the Retained Fees disbursement and the grant application(s) for land record modernization of the Wisconsin Land Information Program pursuant to Wisconsin Acts 31 and 339.
- Participate in Land Information Committee efforts and coordinate land record modernization activities in Marathon County.
- Prioritize the allocation of Geographic Information System (GIS) resources so the County achieves the largest possible benefit from the time and capital expended to date.
- Assist with mapping efforts for the County Comprehensive Planning Process.
- Assist with mapping efforts for the County Hazardous Mitigation Program.
- Assist with mapping for the Gypsy Moth Suppression Program.
- Provide mapping for County participation in the Storm Water Management Program.
- Assist with the County Highway Sign Inventory, Bridge/Culvert Inventory and Mapping.
- Assist with the database development, maintenance and mapping for the Farmland Preservation and Exclusive Agriculture programs.
- Assist with Comm 83 POWTS Inventory location mapping.

**Previous Work:** Departments with direct Geographic Information System (GIS) access in their departments are CPZ; Parks, Recreation and Forestry; Property Description, Health, County Clerk, Highway, and Sheriff.

Departments that have made substantive requests of Geographic Information System (GIS) include Parks, Recreation and Forestry; Administration, UW-Extension, County Clerk, Highway, Library, County Treasurer, Corporation Counsel, District Attorney, Sheriff, and Health.

Sale of standardized map products continues using applications created by staff. Available maps include: Zoning Maps (both County and Independently Zoned towns), Parcel Maps, Town Address Maps, County Road Maps, Supervisory District Maps, Municipal Ward Maps, 208 Sewer Service Map, EMS Maps, Town Base Maps, Land Use/Cover Maps, Aerial Photo Maps, School District Maps, and Livestock Facility Maps. Custom map products have also been provided upon time/data availability. Digital data sales, including aerial photography, using automated routines continue to be a high demand product.

**Methodology:** Existing Geographic Information System (GIS) staff will continue to expend significant effort to develop computer programs for County departments to utilize the Geographic Information System (GIS).

Geographic Information System (GIS) staff will expend significant time to assist departments in development of their databases, maps, and applications to be included in the Geographic Information System (GIS). Similar advisory assistance to local communities is also available to insure compatibility with the County Geographic Information System (GIS).

CPZ staff will submit grant applications for land records modernization under the Wisconsin Land Information Program as directed by the Land Information Committee (LIC).

CPZ staff will keep the Marathon County Land Records Modernization Plan updated and submit it to the WIDOA as directed by the Land Information Committee (LIC).

CPZ staff will assist with data and mapping needs for the County Comprehensive Planning implementation.

CPZ staff will assist with data and mapping needs for the County Hazardous Mitigation Program.

CPZ staff will assist the Highway Department with data collection and mapping needs for the County Highway Sign Inventory Program.

CPZ staff will assist the Regulatory Division with mapping needs for the County-wide POWTS Inventory.

**Product(s)/Objective(s):**

- Assist in the enhancement of horizontal accuracy of the Digital Tax Parcel Map Layer and manage the implementation of this map layer.
- Perform maintenance of the Digital Centerline Address Matching Layer and explore additional uses, such as Census, WisDOT and the CityWatch Program.
- Perform maintenance of the Sheriff Digital E911 Centerline and Response Grid layers.
- Perform maintenance of the Digital Site/building (point) Address Layer and explore additional uses. Possible uses could be GeoCoded well locations, E911 emergency locations and Health related incident location.
- Make as much progress as is practical on the applications and databases requested by Marathon County government departments.
- Complete an updated Digital Land Use map of Marathon County for use in support of planning activities county-wide. The 2008 NAIP Aerial Photography has been utilized for this project. This project is an extension of other Land Use Layer years.
- Assist with the completion of a Digital Future Land Use map of Marathon County for use in support of planning activities county-wide. **Completed**
- Assist with the update of the Digital Future Land Use maps for those towns in the Comprehensive Planning program
- Continue development and maintenance of a Geographic Information System (GIS) Intranet/Internet application to allow access to (GIS) data/maps for users via a web browser.

---

---

**Project No. / Title:** 4901 – Digital Land Use/Cover Map of Marathon County

**Methodology:** The Comprehensive Planner will update the 1990 land cover/use boundaries and attributes to reflect 1997 cover/use and will enter the data, including incorporated areas, using ARC/INFO and/or ARCVIEW software applications to perform these updates. **Completed**

2000 Digital Land Use areas have been delineated utilizing the 2000 Digital Orthophotos as backdrops. The digital work has been done in the CPZ office by a full time LTE and/or the

Planning Technician. The 2000 Land Use areas are the basis for any work on Future Land Use layers. **Completed**

Senior staff selected appropriate land use categories for delineation. Lines are being drawn and attributes attached to the digital land cover/use map. The Comprehensive Planner and the Planning Technician will continue to enter the data into the Geographic Information System (GIS) using a custom application prepared in house.

2008 Digital Land Use areas will be delineated utilizing the 2008 NAIP Color Digital Orthophotos as backdrops. The digital work will be done in the CPZ office by the Planning Technician. The 2000 Land Use areas are the basis for any development of Land Use layers.

**Previous Work:** During the summer of 1996 and 1997, departmental interns completed all the rural towns for the 1990 Land Use/Cover mapping. In the summer of 1999, an intern began image registration to be used as a backdrop for Land Use/Cover updating to represent 1997 uses. In 2000, a summer intern and the Comprehensive Planner began updating the 1997 Land Use/Cover layer using these photos. In 2001, a grant funded LTE began work on the 2000 Land Use/Cover Layer. The Planning Technician has completed this layer.

**Product(s)/Objective(s):** The completed land cover/use map of Marathon County will be used to support and update the farmland preservation plan for Marathon County. This will also assist with traffic modeling for the Wausau Metropolitan Planning Organization (MPO) area. In addition, the map will be available to all entities/communities undertaking comprehensive planning/zoning activities assisted by CPZ staff. This product will assist in the “information gathering” portion for the Wisconsin Land Use Council and the comprehensive planning process.

---

---

**Project No. / Title:** 4902 – Digital Address Map of Marathon County

**Methodology:** The Planning Technician will continue updating the digital house number annotation and point site address maps of Marathon County. In the process, the technician is correcting site addresses in the taxation database and finding/correcting poor addressing schemes in real world locations when possible. The resulting products are maps that can be easily updated in a digital environment and a corrected site address field in Land Records. This information can then be used in Geographic Information System (GIS) geo-location.

**Previous Work:** The Planning Technician has completed the digital annotation address mapping for all 42 towns in the county and all incorporated areas except the City of Wausau. The City of Wausau maintains their address annotation layer, to which the County has access. Address maps are currently available for all 62 municipalities in the county. The point site address layer for the entire county is complete and is now in maintenance mode.

**Product(s)/Objective(s):** The County’s digital address map has a variety of uses including routing vehicles, voter address verification, finding an address for emergency response support. The map also supports the CPZ Department’s ability to locate streets for the plat review process and potential automated address map creation. It also assists in correction of the Land Record System Site Address field data.

---

---

***Project No. / Title:*** 4903 – Tax Parcel Mapping

***Methodology:*** The project's operative staff are the Geographic Information System (GIS) Coordinator and Property Description staff. The Geographic Information System (GIS) Coordinator has been overseeing the project with substantial input from Property Description staff. Property Description is responsible for maintaining this base digital layer. As of July 1, 1996, CPZ staff has been overseeing the updating and Quality Assurance/Quality Control (QA/QC) of the tax parcel map.

The tax parcel map is a daily updated resource within Geographic Information System (GIS). Further work will include the development of more efficient storage structures (migration to GeoDatabase/ARCSDE) and new tools to edit/access the data for 9.x ARCINFO/ARCGIS.

***Product(s)/Objective(s):*** Completion of the map fulfills the compilation portion of this work program element. Development of a positionally (horizontally) accurate parcel base is the follow up to this project completion.

***The original mapping portion of this project was completed in 2001.***

---

***Project No. / Title:*** 4904 – Photography-Imaging

***Methodology:*** This project is part of the Document Imaging Project. The goal is to scan and make available, on the network, all available photographic resources of the County. Agreements exist to continue procuring the USDA Natural Resources and Conservation Services (NRCS) slides. The WisDNR 1992 and 1997 Black and White Infrared photos, in addition to other resources within the county, have been scanned. Investigate other resources of historical imagery.

These photos are being stored on computer hard drives. The Geographic Information System (GIS) Coordinator is lead staff. The CPZ staff will continue slide scanning. Scanned photography currently are: Color 1990 county flight; USDA 1984, 1994, 1995, 1996 1997, 1999 and 2002 color slides; USDA digital imagery for 2003, 2004; NAIP 2005, 2006, 2008; the WisDNR B&W Infrared 1992 and 1997 flights and several smaller flights from 1962, 1969 and 1996. Also available are the 1938, 1948, 1968 and 1978 Black and White images county-wide.

CPZ staff or department interns will scan in additional photos as flights and time become available.

Yearly USDA Color photography has become available in a digital format no longer requiring staff time to scan for those products. There may be some costs associated with acquisition of these flights.

***Objective(s):*** The photo resources of the County are deteriorating and practically unavailable for use. This project preserves and unifies all photos in one location available to all users.

---

***Project No. / Title:*** 4905 – Application Development

***Methodology:*** The Geographic Information System (GIS) Coordinator is responsible for application development and will prepare computer programs to support projects and programs

for departments with access to and/or data on the Geographic Information System (GIS). This is an on-going project with requests made through the CPZ Department. The reason for doing the work is to ensure Geographic Information System (GIS) is operational, consistent and supports departmental needs. Viewer tools have been developed for the following county departments:

- County Clerk to perform voter address verification,
- Sheriff's Department to utilize in squad cars to verify locations including addresses, and
- County Health Department for Sanitarian Stop Sites utilizing their database.

**Product(s)/Objective(s):** Application development will include the formal exploration of additional potential uses/users of Geographic Information System (GIS) within other County departments. The Intranet/Internet is being used as a resource for allowing the viewing of Geographic Information System (GIS) information to the internal and public users.

---

---

**Project No. / Title:** 4906 – Other Related Geographic Information System (GIS)

**A. Wetlands**

**Methodology:** The Wetland map referenced is the WisDNR 1:24000 Wetlands. The map will support multiple programs across several departments.

CPZ has received all the township-range files as of the fall of 1998.

**Product(s)/Objective(s):** Completion of this project has been put off because database coding errors have been found in 75% of the township-range files. The errors have been pointed out to the WisDNR to resolve. Although this product is currently being used, error corrections have not been received.

**B. Health Related Data**

**Methodology:** Geographic Information System (GIS) data related to health issues such as Phase I property assessment, Hazardous Waste disposal, Lead Paint locations, Sanitarian Site visits (has been developed) and Contaminated Water supply sites may be mapped using the Geographic Information System (GIS).

**Product(s)/Objective(s):** This element could produce a myriad of data layers including Private and Public Well locations and Nitrate trends, Blastomycosis trends, High Fluoride areas, Hazardous Waste Disposal travel trends and development of Former Public Landfill Sites. This is dependent on Health Department needs.

**C. Census**

**Methodology:** Geographic Information System (GIS) data related to the 2010 Census mapping will be verified/checked using the Geographic Information System (GIS). This includes the Boundary and Annexation Survey (BAS) and the Local Update of Census Addresses (LUCA).

**Product(s)/Objective(s):** This element will be run in cooperation with the US Census Bureau to assist them with correct delineation of boundaries and addresses for the 2010 Census.

***Project No. / Title:*** 4907 – Geographic Information System (GIS) Aerial Photography

***Methodology:*** The dissemination of Geographic Information System (GIS) aerial photography to others through the use of ArcView and/or ArcGIS to produce the desired hard copies of county aerial photos.

***Product(s)/Objective(s):*** To provide public access to the County's aerial photography archives.

---

***Project No. / Title:*** 4908 – E911 Geographic Information System (GIS)

***Methodology:*** Geographic Information System (GIS) applications for vehicle dispatch will be deployed at the Sheriff's Department using current County Geographic Information System (GIS) standards.

***Product(s)/Objective(s):*** The development/maintenance of the Address Centerline layer and Address Point layer. Other layers involved include the Emergency Response Grid, Emergency Service Zones, Digital Orthophotography, and any other current basemap layers needed to facilitate dispatch of emergency vehicles. These data layers are being utilized in an address location mapping application purchased by the Sheriff's Department. ESRI's ArcView 9.x software has been acquired for GIS analysis as well. A viewer tool has been developed by staff to be utilized in Sheriff squad cars.

---

***Project No. / Title:*** 4909 – Geographic Information System (GIS) Internet Mapping

***Methodology:*** The dissemination of Geographic Information System (GIS) data to others via the Intra/Internet through the use of standard Web Browsers.

***Product(s)/Objective(s):*** An application has been developed utilizing ESRI's ARCIMS software product. Programming and web publishing will continue to be done in cooperation with County Geographic Information System (GIS) staff, City of Wausau Geographic Information System (GIS) staff and Data Center staff.

***Estimated Person-weeks:*** 71.5 (36 GIS Coordinator, 1 Surveyor, 1 Surveyor Technician,  
30.5 Planning Technician, 1 Accounting Assistant, 2 Secretarial)

**Project No. / Title:** 6201 – Storm Water Management

**Goal(s):**

- Minimize discharge of pollutants carried by storm water runoff;
- Develop and implement a single information and outreach program;
- Meet the requirements of NR216;
- Work cooperatively with communities that own and/or operate storm water facilities.
- Advocate changes to WPDES rules that consider cost to local municipalities and outcomes of compliance.

**Background and History:** In 2007, at the request of the Wausau Urban Area communities, the Marathon County Metropolitan Planning Commission formed a Storm Water Management Sub-Committee. Each Marathon County community that owns and/or operates permitted storm water facilities is represented on the committee. North Central Wisconsin communities outside of Marathon County participate but are not members of the committee. The communities represented work cooperatively to create and implement a storm water management program that meets the requirements of NR 216 (Storm Water Discharge Permits).

**Previous Work:** The Storm Water Management Sub-Committee has developed a Memorandum of Agreement to work cooperatively to meet the requirements of NR216 and created a draft Wausau Urban Area Storm Water Education and Outreach Plan. The sub-committee has drafted illicit discharge response procedures, construction site erosion control ordinance, and post-construction stormwater management ordinance, which each community has adopted. The education and outreach component of the annual reporting to the DNR is standardized within the participating communities. The group has passed resolutions, written correspondence, and testified at the Natural Resources Board advocating changes to WPDES rules.

**Methodology:** Marathon County will continue to work cooperatively with the urban communities to achieve the goals of the storm water management program. The subcommittee meets monthly to address storm water management issues.

**Product(s)/Objectives:**

- Implementation of the Memorandum of Agreement executed between county and municipalities;
- Adopted Storm Water Education and Outreach Plan;
- Standardized storm water management related municipal ordinances;
- Standardized storm water management related response and enforcement procedures;
- Standardized reporting of storm water facilities to the Department of Natural Resources.

**Estimated Person-weeks:** 6 (5 Comprehensive Planner, 1 Secretarial)

**Project No. / Title:** 6300 – On-Site Waste

**Goal(s):** The Private On-site Waste System program oversees the location, design, installation and maintenance of holding and on-site sewage disposal systems in the unsewered areas of Marathon County with the goal of surface and groundwater protection and the prevention of the spread of communicable disease.

**Previous Work:** Administration of an On-site Waste program began in Marathon County in 1969 and has changed dramatically over the years with changes in the Wisconsin Administrative Code and changes in the technology related to on-site waste disposal systems.

**Methodology:** Administration of this program is similar to other regulatory programs in that it combines enforcement and education. Enforcement takes the form of permit issuance for and the inspection of a wide variety of septic systems known officially as Private On-site Waste Treatment Systems (POWTS), reviewing POWTS evaluation for property transfers, investigating reports of potential POWTS violations, tracking maintenance of all POWTS for the life of the systems (typically 20+ years), and, when required, referral of violations to Corporation Counsel for prosecution. Education consists of one-on-one discussions with land owners and trades people, and conducting training programs for trades people (mostly plumbers and soil testers) and various groups. Appeals of administrative decisions, and in some cases variance requests and special exception permits, are processed by the Marathon County Board of Adjustment through a public hearing process with assistance from Regulatory and Support Services staff.

**Product(s)/Objective(s):** Through proper siting, design, installation and maintenance of Private On-site Waste Treatment Systems (POWTS), the achievement of the goals listed above.

**Estimated Person-weeks:** 158 (2.4 Director, 8 Land Use Specialist, 92 On-Site Waste Specialists, 9.6 Land Reclamation Specialist, 1 Accounting Assistant, 3 Secretarial, 42 Clerical)

***Project No. / Title:*** 6301 – On-Site Waste - Wisconsin Fund

***Goal(s):*** The Wisconsin Fund program offers a grant to qualified home owners and small businesses to partially reimburse the cost to repair or replace a failed septic system.

***Previous Work:*** Beginning in 1980 with a resolution being adopted by the County Board, the Department began to assist applicants in applying for partial reimbursement from the State of Wisconsin for septic system replacement.

***Methodology:*** This is a state grant program and the protocol is dictated by the State. The Department determines eligibility of home/business owners, writes the grant applications and disperses the funds.

***Product(s)/Objective(s):*** Continue to provide this service as long as the state legislature continues to fund the program.

***Estimated Person-weeks:*** 9.8 (0.5 Director, 1.4 Land Use Specialist, 4 On-Site Waste Specialists, .5 Accounting Assistant, 1 Secretarial, 2.4 Clerical)

**Project No. / Title:** 7102 – Economic Development

**Goal(s):**

- Collect various economic development data for use in marketing the county, its communities and certain industrial sites.
- Provide information to agencies, businesses and industries that may be promoting or considering relocation to Marathon County.
- Provide Census information and determine its usefulness for promoting economic development within Marathon County.
- Work collaboratively with organizations focused on sound economic development.
- Seek out ways to continue collaboration with other counties, specifically Wood and Portage, in economic development activities

**Previous Work:** Economic Development planning must be maintained as an ongoing, continuous process with the CPZ Department monitoring and assisting where ever practical. CPZ staff continues to provide a variety of economic development data and strategies for improving economic conditions in the county. In addition, the Wausau Area Chamber of Commerce, CENTERGY and State of Wisconsin have prepared a number of reports that contain economic development data. Staff continues to monitor work of the North Central Wisconsin Regional Planning Commission in the preparation of the annual element of the District Overall Economic Development Program (OEDP).

Staff provides support to the MCDEVCO.

**Methodology:** The staff will continue to collect and prepare, for distribution to interested firms or individuals, information that will support economic development data needs.

**Product(s)/Objective(s):** Maps, brochures, tables, graphs, charts and related material will be prepared. This information can be distributed to firms assessing Marathon County as an appropriate place for establishment of a business or industry.

Maintain and provide various economic data and census information to determine its usefulness for promoting economic development within Marathon County.

**Estimated Person-weeks:** 2 (2 Supervisor)

**Project No. / Title:** 8000 – Current Planning

**Goal(s):**

- Provide assistance to the County Administrator in developing special strategic planning projects on varying topics.
- Develop short range plans which address immediate planning needs of the County, local communities, and general public.
- Provide access for the county, local communities, and general public to the array of aerial photographic data and products maintained by the Department.
- Provide access for the county, local communities, and general public with general information regarding County governmental operations and where to locate and identify needs and concerns.
- Provide other County departments with requested information.

**Methodology:** Maintain a working knowledge of local issues and events to assist in general information requests. Maintain good working relationships with other County departments, and governmental entities to provide assistance when requested.

**Previous Work:** The Department has been providing aerial photographic products and services to the public upon request since 1990.

The Department has assisted other departments and entities in developing planning processes and addressing current events and issues.

**Product(s)/Objective(s):** Informational products are available upon request. Specialized computer generated products are available upon request.

**Estimated Person-weeks:** 10 (.5 Director, .5 Supervisor, 4 Planner, 2 Planning Technician, 1 Accounting Assistant, 2 Secretarial)

***Project No. / Title:*** 8100 – Zone Change Review

***Goal(s):*** Review and make recommendations for all zone change requests to be heard by the Land Conservation and Zoning (LC&Z) Committee, assisting applicants to assure completeness and proper zoning district selection. Review of independently zoned town zoned changes and recommendations for the LC&Z Committee. Eventually review will include compliance with adopted plans.

***Previous Work:*** Since County Board adoption of the Zoning Ordinance, this project has been part of the work program.

***Methodology:*** Zone change review parallels Zoning Ordinance Amendments as outlined in Zoning Ordinance Amendments, Project No. 4501.

***Product(s)/Objective(s):*** Reasonable and logical zoning that separates incompatible uses.

***Estimated Person-weeks:*** 4.7 (1.7 Director, 2 Land Use Specialists, 1 Comprehensive Planner)

**Project No. / Title:** 8200 – Subdivision (Plat Review) / Certified Survey Map (CSM) Review

**Goal(s):** Review all parcel splits that are ten (10) acres in size or smaller for mathematical correctness and for compliance with Wis. Stat. Chapter 236, County Land Division Regulations Ordinance and cross compliance with other County land use ordinances.

**Previous Work:** Work began in this program, as it is currently administered, in 1989 with amendments to the Land Division Regulations.

**Methodology:** Surveyors submit applications for parcel divisions (certified surveys or subdivision plats), after review for compliance with the Land Division Ordinance and cross compliance, surveyor completes the survey and submits for mathematical review and final review.

**Product(s)/Objective(s):** Orderly layout of development tracts, better control for Geographic Information System (GIS) computer mapping, better cross compliance with other regulatory programs through and by the review of parcel splits before development begins.

**Estimated Person-weeks:** 23 (3 Director, 5 Land Use Specialist, 5 Surveyor, 5 Surveyor Technician, 5 Secretarial)

**Project No. / Title:** 8500 – Official Mapping

**Goal(s):**

- Gather Global Positioning Coordinates for official section and quarter section corners by the County Surveyor for Geographic Information System (GIS) mapping and for use by private surveyors.
- Zoning map development and updates by the Land Use Specialist.
- Global Positioning Systems (GPS) mapping of nonmetallic mine sites by the Reclamation Specialist.

**Previous Work:** These are ongoing projects that have been in place as long as the respective programs have been in force.

**Methodology:** Different Global Positioning equipment is used for survey and nonmetallic mine site mapping and the Geographic Information System (GIS) computer system is used for Zoning map work.

**Product(s)/Objective(s):** The most accurate mapping possible with the technology and equipment that the County currently owns.

**Estimated Person-weeks:** 30.4 (1.4 Land Reclamation Specialist, 13 Surveyor, 13 Surveyor Technician, 3 Land Use Specialist)

**Project No. / Title:** 8702 – Census

**Goal(s):**

- Provide Census data to the public.
- Create maps and products using Census 2000 data.
- Prepare for 2010 Census
- Prepare for redistricting process

**Previous Work:** The CPZ Department continues to provide demographic data to residents of the county, government offices and County departments.

**Methodology:** To convert data sources from the Census Bureau into a format useable in the County's Geographic Information System (GIS) system. Participate in 2010 Census programs. Establish and coordinate the Complete Count Committee. Develop and implement a Census 2010 educational/promotional program.

**Product(s)/Objective(s):** Combine census data with the digital census maps and perform demographic analysis as requested. Continue integrating census data into the Geographic Information System (GIS) and have available demographics to relate to other Geographic Information System (GIS) products.

To make census data available to other County departments, agencies, developers, industry, etc. Progress is being made to place Census Data on the current network as a system-wide resource.

**Estimated Person-weeks:** 5 (4 Planner, 1 Planning Technician)

**Project No. / Title:** 8802 – Digital Aerial Photography/Remote Sensing

**Goal(s):**

- Oversee methods, specifications, funding, costs and procedures for updating the County Geographic Information System (GIS) Digital Base Map Layers and Digital Orthophotography.

**Previous Work:** Marathon County has a Digital Base Map that was developed from May 1990 Aerial Photography. Another flight was performed in 2000 to coincide with the 2000 Census that was used to update digital layers that were developed from the 1990 flight. Department staff has overseen the acquisition of the April 2005 Digital Aerial Photography.

**Methodology:** Department staff has performed quality checks on all the 2005 Digital Aerial Photography and the updated planimetric base map layers delivered by the consultant. The 2005 data has been checked and project completed. Other current aerial photography acquisitions will be investigated. Development of specifications for the 2010 flight, to coincide with the 2010 Census, has been completed working with the Regional Planning Commission consortium. A vendor group has been selected for this project.

**Product(s)/Objective(s):** Methods, specifications, funding, costs, procedures, and quality checks for Digital Imagery acquisition and Digital Base Map Layer updating.

**Estimated Person-Weeks:** 2 (2 GIS Coordinator)

**Project No. / Title:** 8803 – Hazard Mitigation Planning

**Background and History:** In 2003, CPZ applied for and received a planning grant for the development of the Marathon County Hazard Mitigation Plan. The plan was developed to meet the requirements of the Federal Emergency Management Agency (FEMA). The Plan was approved by resolution of the Marathon County Board in May 2006. An update of the plan is required by FEMA to be eligible for disaster relief, planning grant, and hazard mitigation project funds. Each incorporated community is also required to adopt the plan by resolution to be eligible for the funds. In 2008, CPZ applied for a grant to update the plan for 2011. The grant was awarded in August 2009.

**Goals(s):**

- Minimize the impact of hazards through planning and hazard mitigation
- Meet the requirements of FEMA
- Work cooperatively with communities for a county-wide hazard mitigation plan/program

**Previous Work:** Previous hazard mitigation work consisted of grant writing only.

**Methodology:** CPZ and Marathon County Emergency Management will work with the communities to update and adopt the Marathon County Hazard Mitigation Plan.

**Responsibilities:**

Grant Application:

*Responsibility:* Planning grants – Conservation, Planning and Zoning  
Project grants – Emergency Management

Plan Evaluation: The current hazard mitigation plan must be evaluated for content, effectiveness, and priorities. FEMA has new requirements of hazard mitigation plan content since the 2006 planning guidance. The current plan must be compared with FEMA requirements to identify voids in the plan.

*Responsibility:* Conservation, Planning and Zoning

Data Collection: Information contained in the plan must be updated.

- Document and quantify (cost, injury, damage, etc) all natural and man-made hazard events (winter storms, tornados, fire, water contamination, flooding, etc).
- Document mitigation strategies that have been implemented.

*Responsibility:* Emergency Management

Projection of Risk: The likelihood of, and future damage resulting from, a hazard must be determined. This determination will be based on a history of hazards in Marathon County, land use patterns, completed mitigation strategies, etc.

*Responsibility:* Conservation, Planning and Zoning

Education and Outreach/Public Input:

- Update oversight committee and media of progress
  - Seek input from communities, oversight committee, and the public
- Responsibility:* Plan update – Conservation, Planning and Zoning  
Implementation progress – Emergency Management

Plan Writing:

*Responsibility:* Conservation, Planning and Zoning

Plan Implementation:

- Research funding opportunities for implementation
- Coordination of mitigation regional projects
- Monitor, document, and report implementation progress

*Responsibility:* Emergency Management

***Product(s)/Objectives:***

- Adopted Hazard Mitigation Plan

***Estimated Person-weeks:*** 8 (4 Comprehensive Planner, 1 GIS Coordinator, 1 Planning Technician, 1 Accounting Assistant, 1 Secretarial)

**Project No. / Title:** 8901 – Address System Maintenance and Enhancement

**Goal(s):**

- Maintain and make recommendations concerning existing address systems.
- Coordinate development of address systems between local government and County government.
- Advise other departments and local government on the correct application of the address systems in place.
- Manage addresses as a county-wide resource.
- Develop a more detailed Addressing Ordinance.

**Previous Work:** CPZ has advised municipalities on the development of address grids and maps for many years.

CPZ has developed digital address maps for matching addresses to streets in the Geographic Information System (GIS).

CPZ staff is working with the City/County Information Technology Commission, Property Description, Local Governments and the Sheriff's Department to put in place procedures to ensure that all parties are notified of address changes.

**Methodology:** To work with local governments and other departments to solve problems with address systems.

To continue developing addresses as a managed resource for County government databases and for the provision of emergency services county-wide.

**Product(s)/Objective(s):** Systematic, logical, manageable address systems and maps of the unincorporated municipalities of Marathon County in digital form.

**Estimated Person-weeks:** 3 (3 Planning Technician)